



**BIMM
UNIVERSITY**

Berlin

Welcome Pack

City guide

Accommodation guide

Health insurance & visa advice

Induction and enrolment

Student life

Campus information and useful contacts



Contents

Welcome	4
About Berlin	6
About BIMM University Berlin: our universitys	14
Our facilities	16
BIMM University Berlin courses	22
Getting around Berlin	24
Other forms of transport	26
Airport transfers	28
Accommodation guide	30
Living costs	32
House hunting	34
Private lettings	36
Student accommodation providers	38
Accommodation providers & lettings agencies	44
House viewings tips	48
Accommodation FAQs	50
Renting procedures – what you need to know	52
Glossary of terms	53
Planning your move to Germany	54
Visa information	56
Health insurance	60
Essential equipment	62
Student perks & discounts	64
Induction and enrolment	66
Get connected	70
Freshers guide	72
University information and useful contacts	74
IT and technical resources	76
Join us in Berlin	78
Glossary	79

Welcome

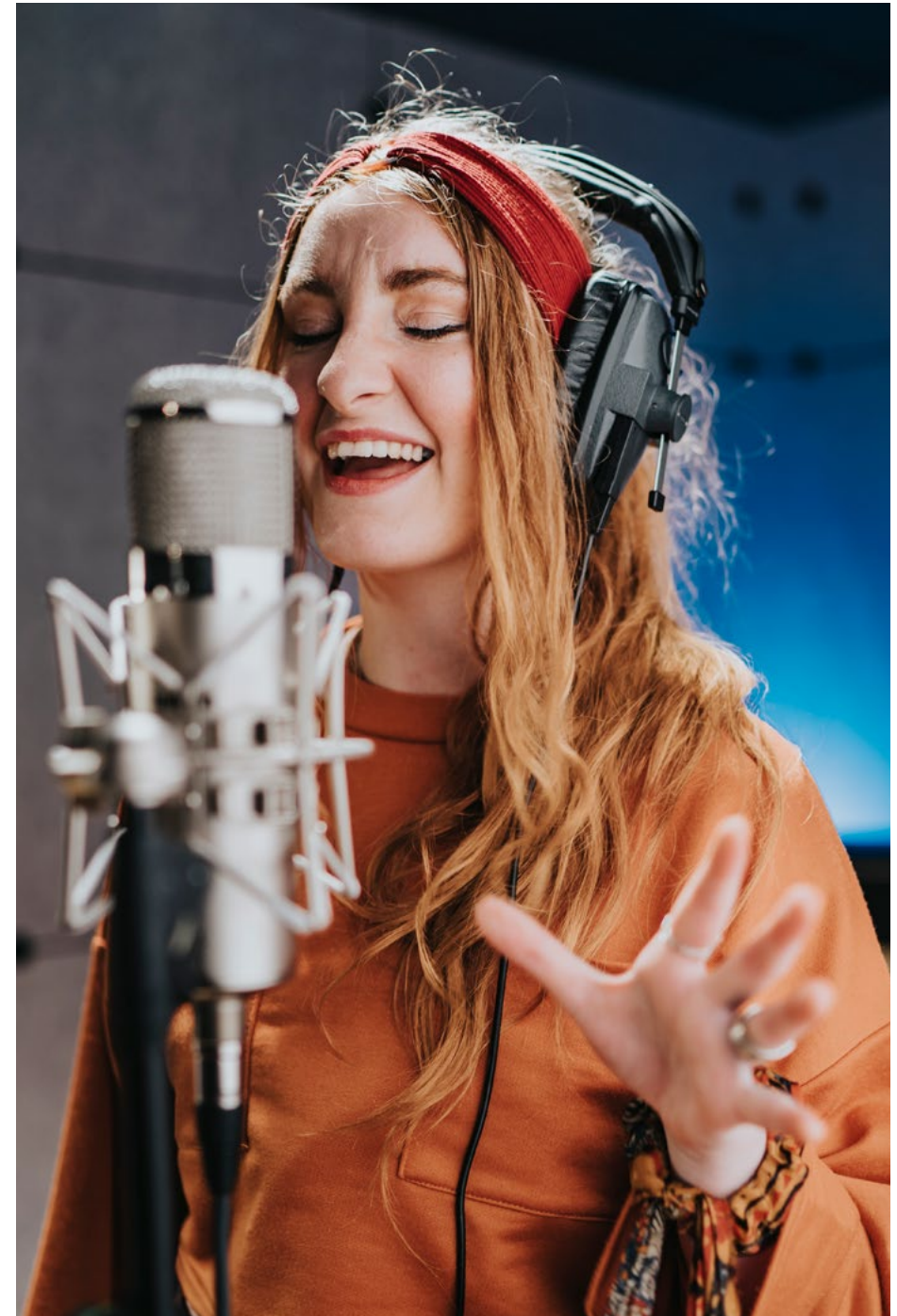
Welcome to BIMM University Berlin. We understand that choosing the right place to study and nurture your talent is a significant decision, and we are thrilled that have you joined our creative community.

At BIMM Berlin, we believe that our greatest asset is the people we attract and nurture. Our teaching teams consist of current practitioners in the music, film, video games and performing arts industries who are dedicated to ensuring that your learning experience is of the highest quality. Equally important are our students, who each year bring new skills, interests, and experiences that enrich our creative communities. By choosing BIMM University Berlin, you have already taken a bold step towards a creative education and career.

BIMM University Berlin students will attend classes taught in English within our state-of-the-art professional facilities, and join a truly international and diverse student cohort. As a member of our university, you will establish yourself within a network that offers inspiration, mentorship, and industry connectivity.

Our entire team here are eager to get to know each and every one of you as individuals. They're here to support your adaptation into an ever-changing industry, an industry in which you have the power to disrupt and shape your own creative professional pathway and to build a sustainable future in.

BIMM University Berlin Student Wellbeing and Support Team



About Berlin

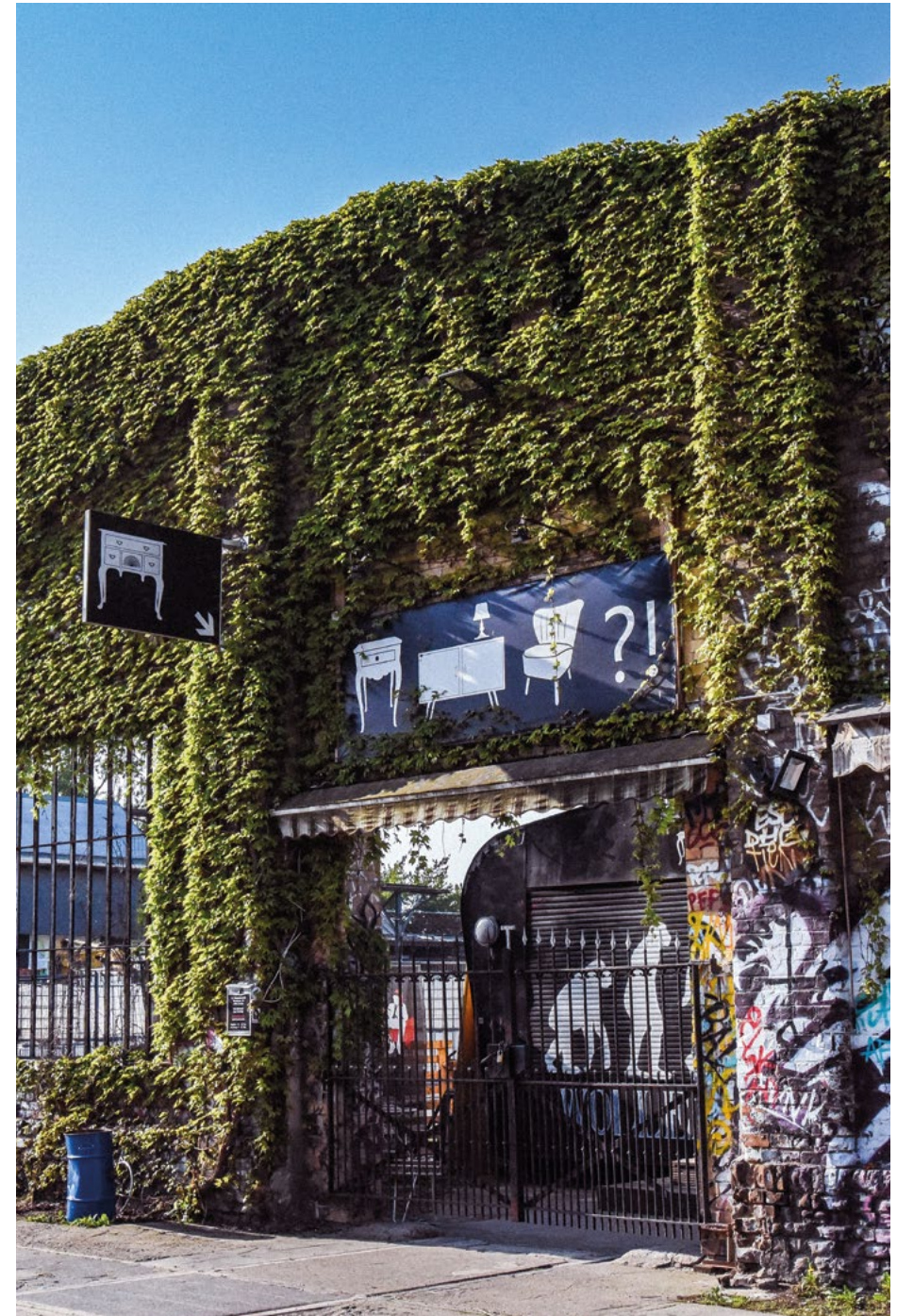
Your city

Welcome to Berlin. This is where one of the most diverse and welcoming creative scenes in the world unites in the name of collaboration and exploration. From experimental music forms to trailblazing cinematic aesthetics, Berlin is the perfect place to let your creativity run free. With a thriving cultural sphere and Friday nights that regularly stretch through to Mondays, thousands of creatives just like you call Berlin their home.

Whether for music, film, performing arts, video games, or something that incorporates all four, creatives internationally have long looked to Berlin. As a member of Berlin's world-famous creative community, you will have the chance to explore and trail blaze your creative vision alongside like-minded peers. Berlin is a city characterised by a collision of cultures and creative art forms where there are no limits placed on your ideas.

To complement this endless opportunity, the city boasts some of the most important creative facilities across the globe, including Hansa Studios and Babelsberg Film Studio. Undoubtedly world-renowned, both locations have drawn creatives from across the globe for decades – from David Bowie & Siouxsie and the Banshees to Wes Anderson and the Wachowski sisters.

The tourist guides may not always be able to catalogue it, but there is always something interesting happening in this city made for creative visionaries. Where better to launch your career in the creative industries?



Things to see and do

The East Side Gallery This is a huge section (1.3km) of the Berlin wall that was left standing, and has been turned into a gallery to celebrate the work of 105 artists from all around the world.

Brandenburg Gate One of Berlin's most iconic landmarks dates back to 1791 when it was first built as the Royal City Gate.

Tiergarten Park Tiergarten Park is a very central and relaxing place to be if you fancy a stroll. There are ponds and ornamental gardens to see and explore.

Holocaust Memorial The memorial in the centre of Berlin was created to pay respect to the 6 million Jewish people who lost their lives in the Holocaust. 2,711 concrete slabs of varying height create a maze-like atmosphere in the centre of Berlin.

Flea Markets These are a great place to pick up a bargain and they occur all across the city throughout the week.

Checkpoint Charlie The original gateway between East and West Berlin.

Bearpit Karaoke Join the crowds at Mauerpark on Sundays, when people pile into an outdoor amphitheatre to watch and cheer on brave singers.

Visit a lake Berlin is surrounded by lots of lakes and a Berlin tradition is to jump on a train when the weather is nice and go for a swim in one of the lakes nearby!

If you want to escape the crowds, take a

wander around or have a picnic in one of Berlin's numerous parks. The city is full of relaxing and interesting open spaces. Tempelhofer Feld is a former airfield that has now been turned into a public space, and there are often art installations taking place in the open spaces in and around Berlin.

Culture

Did you know that there are more than 170 museums in Berlin? If you are interested in history, culture, the arts, and are looking for cheap options, you can visit free museums. For more information: www.visitberlin.de/en/museums-free

If you want to get to know local musicians and expand your social network, you can always join jam sessions that take place regularly. You can see a list of places here: berlinersessions.de

Do you like theatre? Have a look here: www.etberlin.de The English Theatre Berlin hosts plays and other events that might be interesting for you.

If you want to find out about what else is happening in Berlin check out: www.goout.net/en/berlin

They have a list of events from various venues across the city. You could also visit different places like SO36 (<https://so36.com/>), Cassiopeia (<https://cassiopeia-berlin.de>) or Berghain (<https://berghain.berlin/en>), to just name a few.

Opportunities to party and go out are numerous in Berlin and it's a great way to discover the city.

Berlin is a very diverse city with lots of different social and leisure activities to suit everyone. With so much to see, do and experience, you may feel a little overwhelmed as to where to begin.

The good news is that many of Berlin's top attractions are free so you don't need to worry about spending too much money.

Eating out

Berlin is crammed with good places to eat and if you look closely then there are plenty of places to pick up tasty, healthy and cheap food.

There are a range of diverse cultures and cuisines, so there really is something for everyone. Berlin is very accommodating for all dietary needs, such as vegetarian, vegan, kosher, halal and gluten free.

There are restaurants, cafés and food markets where you can sample the local German delicacies or find something different from the wide range of cuisines that are represented within the city.

Every type of food is available within a variety of price ranges, however, on a student budget it's a good idea to shop and prepare your own meals to help keep costs down.

Grocery stores and supermarkets are scattered throughout the city, shops like Netto, Lidl and Aldi provide an inexpensive way to do your weekly shop.

Other supermarkets such as Rewe, Edeka and BioMarkt provide a bit more of an upmarket option and you may be able to get some products here that you can't in the cheaper options.

Note: the majority of shops, including all supermarkets, close on a Sunday, so make sure that you stock up with all the essentials on any other day of the week.

If you really find yourself stuck on a Sunday and need somewhere to do a grocery shop, check out the big S-Bahn stations as they sometimes have supermarkets that are open on a Sunday, but make sure that you look into this before you go.

Electrical voltage

The electrical voltage in Europe is 230v, compared to 240v in the UK and 120v in the US. The plugs have two pins, so if you're bringing electrical equipment from home, you may need an adaptor and transformer. Bear this in mind when deciding whether to bring small goods with you.

Staying safe

Berlin has a relatively low level of major crime and what does occur is typically opportunistic in nature.

For example, crimes such as pick-pocketing, street harassment and petty theft are some of the more common crimes that happen in Berlin. There are also a large amount of reported bike thefts, so if you do buy a bike once you are here, invest in a good lock, and make sure that you store it somewhere safe at all times.

On a daily basis, millions of people go about their lives without any difficulties. You're unlikely to be a victim of crime but it's important to always remain streetwise and safe. Remember, personal safety is often about using your common sense. Plan journeys in advance, keep to well-lit areas at night and don't take short cuts through alleyways or parks if you're walking alone.

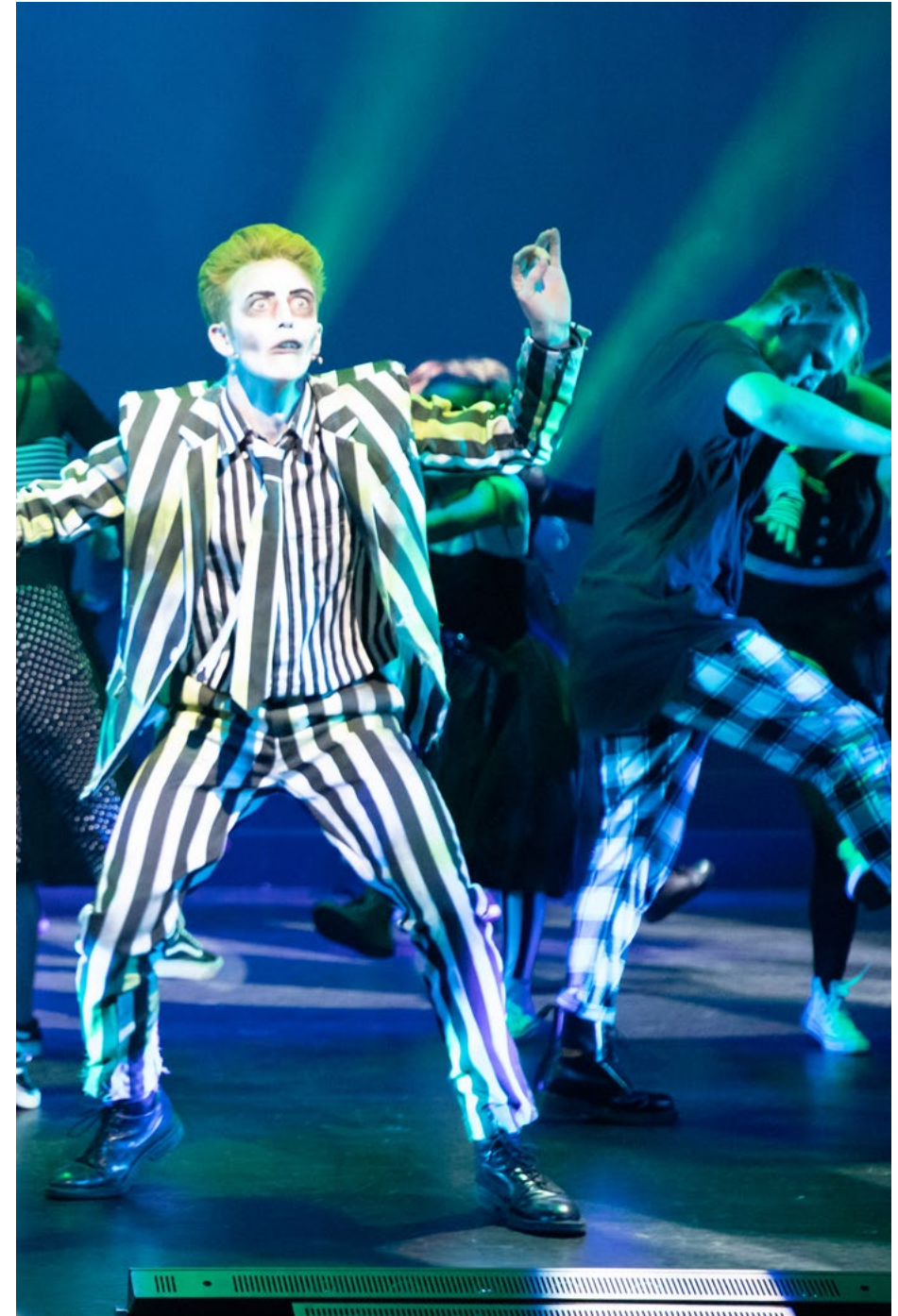
Keep your belongings close to you and in a safe place. Make sure that you have a secure place on you to keep your wallet and phone so that it is not easily accessed by opportunist thieves. Make sure that you tell someone where you are going if you're going out alone, and use pre-booked taxis to get home late at night rather than walking.

112 is the European Emergency number. You can call this number for free, anywhere in the EU. By calling this number you can contact the emergency services, police, ambulance/paramedic and fire brigade. Call handlers do speak English but may likely answer in German. Put this number in your phone and remember it in case you find yourself in an emergency situation.

Illegal downloading

Illegal downloading of films, music and any other form of entertainment is taken very seriously in Germany. It is common to incur a fine of thousands of Euros if you are caught downloading, and it's a common occurrence that people get caught.

Unlike other countries that might not take it very seriously, Germany is extremely strict with people who are caught downloading. Make sure that you don't get fined, so don't download illegally.



My Berlin (Louise Vangilbergen)

Music Business graduate



First things first

First, get yourself a public transport ticket. Berlin is 9 times bigger than, for example, Paris. You'll find yourself using the subway a lot, and Berlin has one of the best underground networks in Europe. Or get yourself a bike! It's a perfect city for cyclists and you'll be able to see way more of the city. For a bit of history, book a free tour at the Reichstag Building and enjoy the view from the dome.

See the different sides of Berlin

Berlin is full of history and, as you will remember from your history lessons, it was divided in two until 1989. Apart from the visual differences in architecture, there's no real sense of division any more for our generation. Berlin has 12 districts, known as Kieze, and each of them has its own strong identity.

Live music & cinemas

From cinemas to club nights, Berlin has you covered. Berlin is a cinephile's dream city thanks to its many multiplexes, art house cinemas and independent spaces that offer everything from blockbusters to classics. When it comes to music, the city might be renowned for techno and minimal, but also caters for various styles of music meaning it is a key location on the touring circuit for artists of all genres.

Culture

The Museum Island in the centre of town is home to five museums, each of them offering amazing permanent exhibitions where you can immerse yourself for hours in art and history. The district of Friedrichshain offers a number of cultural spaces, including the famous graffiti-laden RAW Gelände.

Shopping

Not to break with tradition, THE shopping street is the Kurfürstendamm; the top end offering the more traditional high street shops and the bottom end all the exclusive luxury brands. For more of an outdoor shopping experience, the area around Weinmeisterstraße is the place to be, but every district has its own little independent shops. For rainy days, there are plenty of shopping emporia to choose from, such as the Mall of Berlin, KDW and Bikini House for an artier vibe.

Must-sees in the city

Be sure to visit one of the city's bunkers, they offer tours in lots of different languages and it's a great way to soak up some history. Take a stroll along the Landwehr Canal, which is lined with bakeries, bars, restaurants and shops. The high spot is grabbing a beer at a Späti and heading to one of the many bridges to watch the sun go down.

Fun fact

As Berlin was divided into two for such a long time, you'll find there are two zoos, two opera houses and, in some cases, two of every street name, so always make sure you include the right post code with your address.

About BIMM University Berlin: our schools

BIMM University Berlin has two university locations in the city, both located a short distance on bike or public transport from each another through some of Berlin's most thriving cultural districts.

BIMM University Berlin - House of Music

In 2019, we opened our doors in the refurbished House of Music building on the R.A.W. Gelände. Found in the intersection of Berlin's most creative districts: Friedrichshain and Kreuzberg, the three-storey House of Music is one of R.A.W Gelände's oldest and largest remaining industrial buildings. It was originally built in the mid-19th century as a railway premises, but today represents Berlin's only dedicated music complex.

Being creative and connecting you to the heart of the industry is what we're all about and we host a range of incredible events right here at House of Music including international industry networking events, live performances, student showcases and intimate workshops with students and industry professionals.

BIMM University Berlin - Molecule Studios

Based just a short distance away from House of Music, Molecule Studios in Alt-Treptow offers industry-standard filmmaking and acting facilities to students.

Based at Bouché Höfe, the building has played a pivotal role in Berlin's cinematic history. As the former base of AFGA, a company that has developed camera and recording film for nearly a century, there is no better place to develop the next generation of creatives.

Facilities at BIMM University Berlin

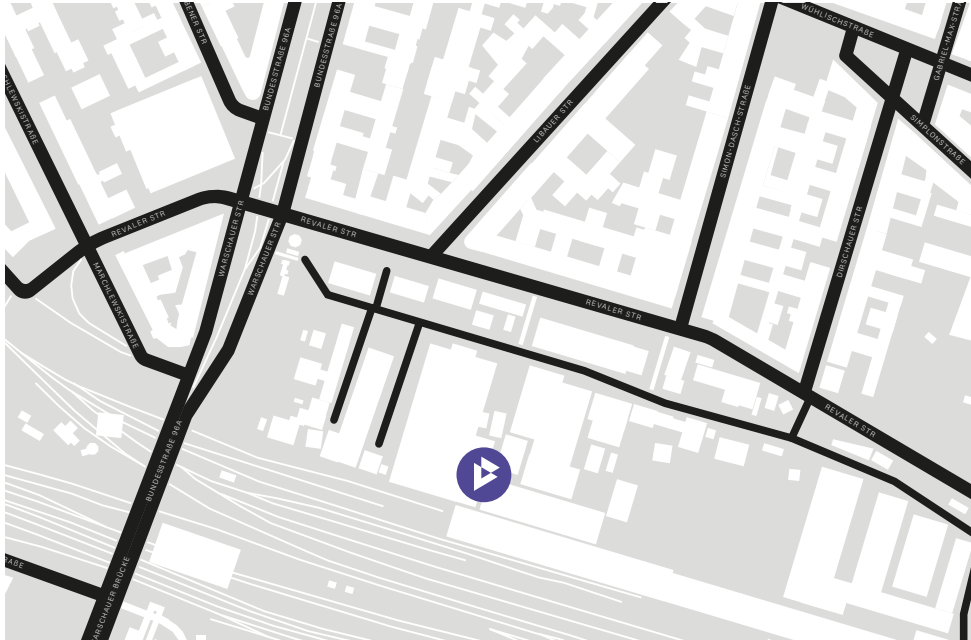
As a student at BIMM University Berlin, you will have access to industry-standard facilities, equipment and technology to prepare you for your career in the creative industries. Across both our buildings, here are some of the facilities you can expect:

- State-of-the-art recording, film and production studios
- Access to high-tech equipment thanks to partnerships with professional audio-visual companies
- Mac labs equipped with the latest recording and editing software
- Fully equipped teaching and tutorial rooms
- Multi-purpose rehearsal rooms accessible outside of teaching hours
- Screening rooms
- Live performance spaces
- Communal networking areas

Students have access to facilities when they are not in use for teaching, including outside normal teaching hours. Slots in the rehearsal and studio rooms are bookable through siso and Mac Labs are available without booking when not in use for teaching. You can use this time for independent self-study, rehearsing or working on your own projects.

Students can also book out equipment from our Buildings & Technical Team, including a broad array of instruments, mobile recording and film-making equipment.

Our facilities

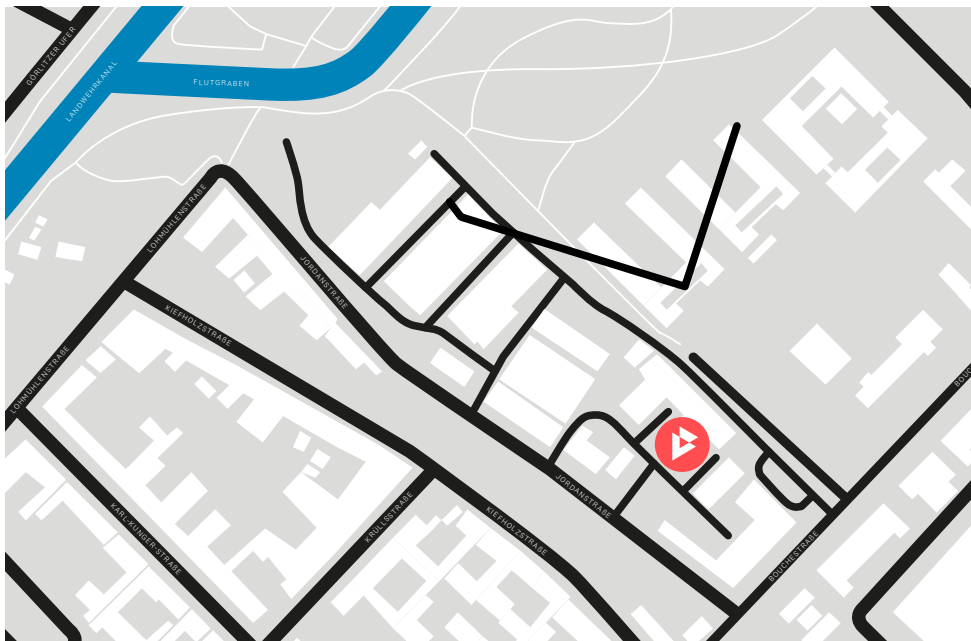


Music, Acting and Creative Technology

BIMM University Berlin – House of Music
Revaler Str. 99
10245 Berlin

Public transport options

Train: S3, S5, S7, S9, S75 (Warschauer Str.), S41, S42 (Ostkreuz)
Tram: M10, M13 (Warschauer Str., Revaler Str.)
Bus: 240, N40 (Grünburger Str./Warschauer Str., Simon-Dach-Str., Boxhagener Platz)



Film

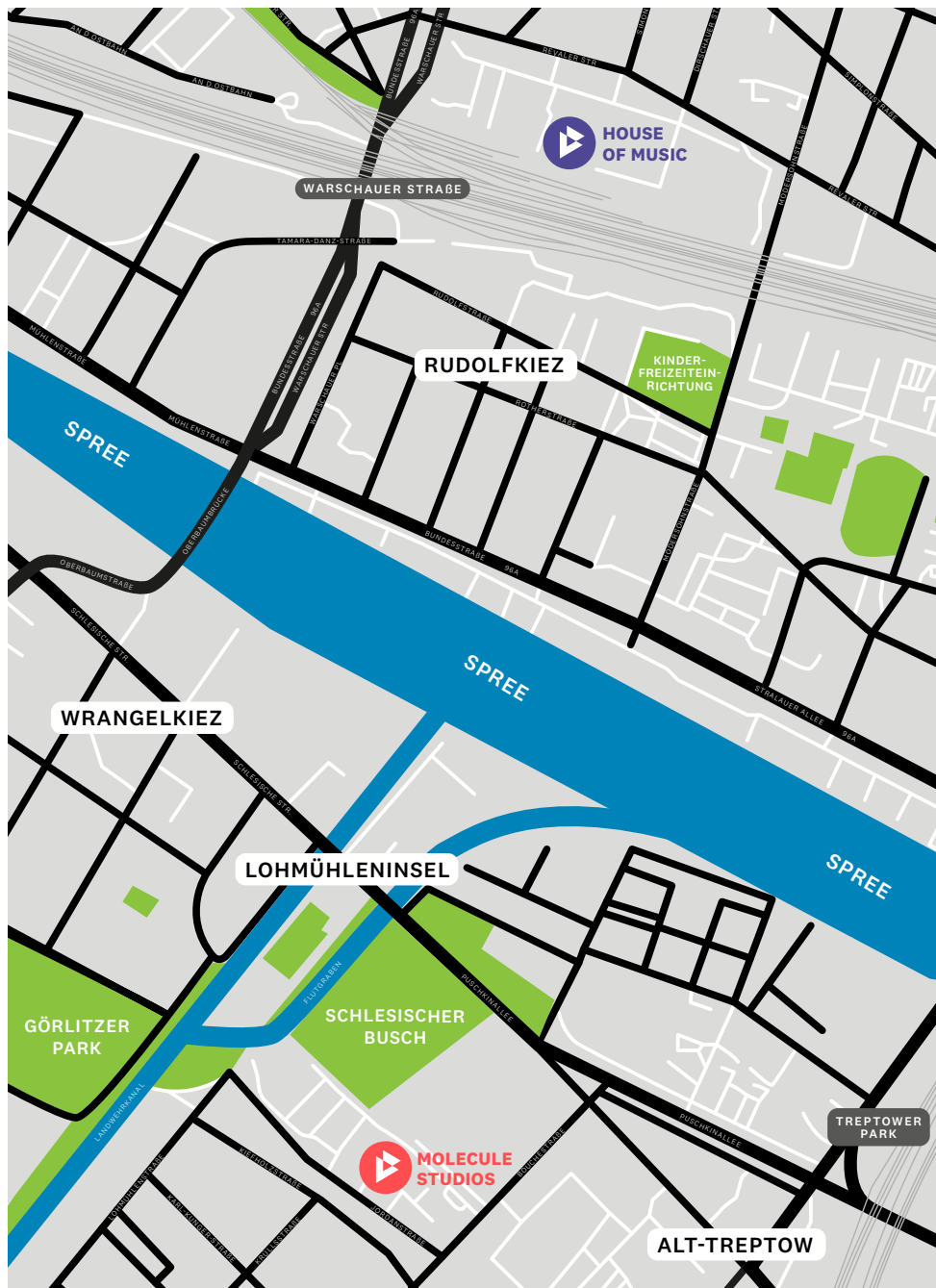
BIMM University Berlin – Molecule Studios
Bouchéstr. 12
Haus 1
12435 Berlin

Access via Jordanstraße.

Public transport options

Train: S8, S9, S41, S42, S85 (Treptower Park)
Bus: 165, 171, 194, N94 (Bouchéstr.)

Travelling between our facilities



House of Music > Molecule Studios

Train

From House of Music, head towards Warschauer Str. S-Bahn station. There, you will have two options:

1. Take the S9 heading east to Treptower Park. Leave the train at Treptower Park and turn right towards Elsenstraße and Puschkinallee. Turn right on to Puschkinallee and walk until Bouchéstr. Turn left on to Bouchéstr. and then right once you reach Jordanstr. Go through the entrance after the LPG supermarket on your right, and you will find the building right ahead of you.

2. Take the S3, S5, S7 or S75 towards Ostkreuz. At Ostkreuz, change for the ring (S41) and ride the train to Treptower Park. For the rest, follow the instructions above. The journey (including walking) should take approximately 25 minutes.

By bus

From House of Music, cross the River Spree using the Oberbaumbrücke and take the 165 bus from Falkensteinstr. Ride for 3 stops until Eichenstr./Puschkinallee. Turn right at Bouchéstr and follow the street until Jordanstr, where you should turn right. Go through the entrance after the LPG supermarket, and you will find the building right ahead of you.

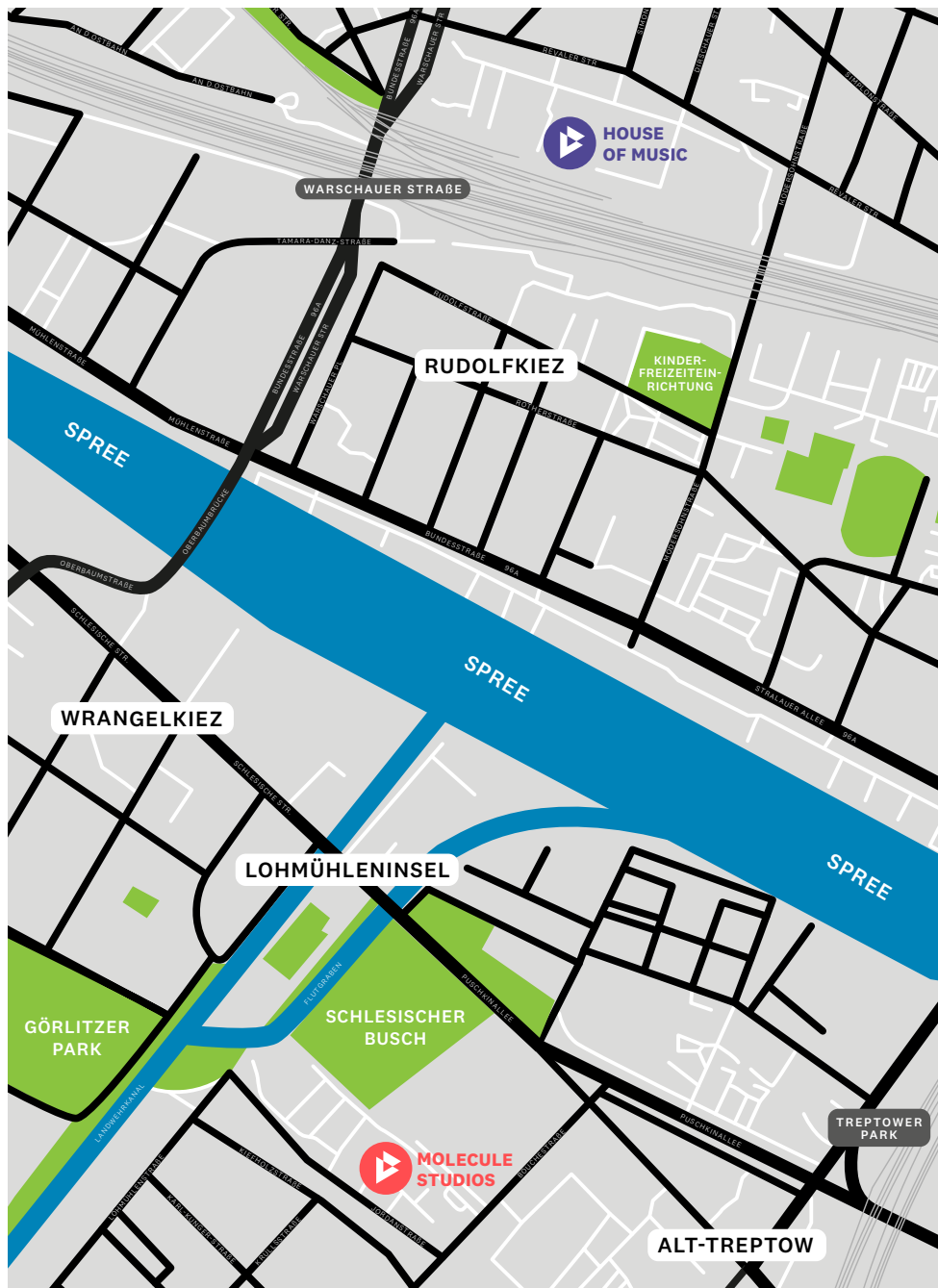
The journey (including walking) should take approximately 30 minutes.

By bike/foot

From House of Music, cross the River Spree using the Oberbaumbrücke. Carry on on to Falkensteinstr. and then turn left on to Schlesische Str. Follow the road for around 500m before turning right on to Lohmühlenstr. Once you reach Jordanstr. turn left. Follow the street and go through the entrance just before the LPG supermarket on your left. You will see the building right ahead of you.

The journey should last approximately 10 minutes by bike and 30 minutes by foot.

Travelling between our facilities



▶ ▶ Molecule Studios > House of Music

Train

From Molecule Studios, head towards Treptower Park S-Bahn station using Puschkinallee. There you will have two options:

1. Take the S9 heading west towards Warschauerstr. Leave the train at Warschauerstr. and head out on to the street. Turn right to walk along Warschauer Str. Enter the RAW Gelände on your right and walk until you reach House of Music.
2. Take the ring (S42) heading towards Ostkreuz. At Ostkreuz, change to take either the S3, S5, S7 or S75 heading west towards Warschauer Str. For the rest, follow the instructions above.

The journey (including walking) should take approximately 25 minutes.

By bus

From Molecule Studios, head towards Puschkinallee and take the 165 bus from Eichenstr./Puschkinallee. Ride for 3 stops until Falkensteinstr. Cross the River Spree using the Oberbaumbrücke, and continue until you reach the RAW Gelände (step access on the right before Revaler Str., step-free access via Revaler Str.). Then, head towards House of Music.

The journey (including walking) should take approximately 30 minutes.

By bike/foot

From Molecule Studios, head out on to Jordanstr. and turn right. Follow the street until you reach Lohmühlenstr. Turn right and continue until you reach Schlesische Str. Follow the road for around 500m until you reach Falkensteinstr, where you should turn right to cross the River Spree using the Oberbaumbrücke. Continue straight up Warschauer Str. until you reach the RAW Gelände (step access on the right before Revaler Str., step-free access via Revaler Str.). Then, head towards House of Music.

The journey should last approximately 10 minutes by bike and 30 minutes by foot.

BIMM University Berlin courses

Undergraduate courses:

- BMus (Hons) Popular Music Performance (Vocals, Guitar, Bass, Drums)
- BMus (Hons) Songwriting
- BMus (Hons) Popular Music Performance & Songwriting
- BA (Hons) Music Production
- BA (Hons) Music Business
- BA (Hons) Filmmaking
- BA (Hons) Acting for Stage, Screen & Digital Media
- BA (Hons) Songwriting & Music Business
- BA (Hons) Games Art and Technology
- BA (Hons) Games Design and Development
- BA (Hons) Filmmaking Top-Up
- CertHE Screen and Film
- CertHE Music

Postgraduate courses:

- MA Popular Music Practice*
- MA Screen & Film Production

All courses are validated by BIMM University. Each course starts in late September and is taught over two semesters, each 15-weeks long.

*MA Popular Music Practice, and MA Screen & Film Production (1-year full-time), are taught over three semesters, each 15-weeks long.

The MA Popular Music Practice and MA Screen & Film Production (2-years part-time) are taught over two semesters in the first year, and three semesters in the second year.

For full course information, fees and entry requirements visit: www.bimm-institute.de/course-finder

Please note that courses are subject to change and availability.



Getting around Berlin



Public transport

Public transport throughout Berlin is both inexpensive and reliable, with a combination of buses, trams, underground and suburban trains serving the metropolitan area. The city is also extremely bicycle-friendly, with dedicated cycle paths and plenty of secure storage.

If you are going to be using public transport regularly, we recommend purchasing a monthly or annual pass – it's a lot cheaper in the long run.

Berlin's public transport operator is called BVG, and we recommend downloading the BVG Tickets app or looking on the BVG website (www.bvg.de) to plan your journeys and for details on ticket prices. If you are going to use public transport regularly, then you can also purchase monthly or annual passes to help save you money.

At the time of publication Germany offers a 49€ ticket by subscription. Students are opting for this option as it is cheaper than a monatskarte and a semester ticket. For further information please visit: <https://www.bvg.de/en/deutschland-ticket>

Berlin's transport network is split into three zones. Tickets are typically priced for just AB (the central two zones) or ABC (all city zones) and priced €3.20 or €4.00 respectively for

single journeys. Tickets can be used on all forms of public transport in Berlin including trains, trams, buses and the underground. Berlin Brandenburg Airport (BER) sits within Zone C, so an ABC Zone ticket must be purchased when travelling to and from the airport. Tickets can be purchased through the BVG Tickets App or via machines on the station platform. Please remember to always validate your ticket using the machines on the platform, otherwise it won't be valid. See 'Airport Transfers' for further information on access to Berlin City Centre from the airport.

Berlin Transport Map

https://sbahn.berlin/fileadmin/user_upload/Liniennetz/S_U-Bahn-Liniennetz.pdf

Other forms of transport

As public transport in Berlin is reliable and well organised, we strongly recommend you take advantage of it. You are of course welcome to bring your own car should you deem it necessary, but please note that there is no onsite parking at our House of Music facilities and parking spaces in the area around our Bouchéstr facilities are very limited.

If you do have a car and your residence is located in a parking zone, you can obtain a resident parking permit. An application can be obtained at the responsible district office (Bürgeramt). The permit allows free parking in the parking zone in which the vehicle owner is registered and is valid for a maximum of two years. The administrative fee is currently €20.40 for the specified period (as of January 2023.) Guest vignettes can be applied for by the day or by the week.

We strongly encourage you to take advantage of the city's many cycle paths. As a fairly flat city with roughly 620km of dedicated bike routes, it's something of a cyclist's dream. There's also a wealth of bike storage space in the area, and there are plenty of bike workshops nearby should you need to get yours repaired.

Should you not own a bike but want one, you might want to check out Swapfiet. They rent out bikes on a long-term basis, and any repairs are already included in the membership fee.

Lastly, there are also several reasonably

priced vehicle sharing companies, should you wish to take advantage of these.

Some of our favourites include:
Mopeds/eScooters: [Lime](#), [Circ](#), [Tier](#), [Emmy](#)
Cars: [SIXT Share](#), [Miles](#) and [ShareNow](#)
Bicycles: [Nextbike](#), [Donkey Republic](#), [Limebike](#).

We recommend downloading the [Jelbi App](#) that meets all your mobility needs. Jelbi is the mobility app that can do it all, offering access to all services available in Berlin, from journey planning to booking and payment.

A more detailed list is available here: www.berlin.de/en/getting-around. Please be aware that you will need to check all legal requirements for these services – make sure you have the appropriate licences if necessary, and do make sure to adhere to the rules of the road and safety standards (i.e. wear a helmet).



Airport transfers

Berlin Brandenburg Willy Brandt Airport (BER) is well connected by public and road transport. The Airport Express (FEX) and regional trains together run four times an hour from the station found under Terminal 1 to Berlin Central Station. In addition, the S9 and S45 S-Bahn trains travel from T1/T2 into Berlin city centre.

The railway station at the airport is directly below Terminal 1. The Airport Express and regional trains travel to Berlin Central Station (Hauptbahnhof) four times per hour. The journey takes 30 minutes. In addition, the S9 and S45 S-Bahn train lines connect BER to the city centre, travelling every 20 minutes.

We recommend the below routes to access our university buildings from the airport using public transport:

BIMM University Berlin House of Music:

We recommend taking the FEX train from Berlin Brandenburg Airport and changing at Ostkreuz. You can then take the S3, S5, S7, S9 and S75 to Warschauer Straße S-Bahn station, and BIMM University Berlin Friedrichshain is a 5-minute walk from the station.

BIMM University Berlin Molecule Studios:

Similar to accessing the university building in Friedrichshain, we advise taking the FEX train from Berlin Brandenburg Airport and changing at Ostkreuz. You can then take the S41 (Ringbahn) one stop south to Treptower Park S-Bahn station. BIMM University Berlin Treptow is then a 10–15-minute walk.

Alternatively, take the 194 bus from Ostkreuz towards U Hermannplatz and depart after 5 stops at Bouchéstr. BIMM University Berlin Treptow is a short walk from the bus stop.

Lastly, you can take the S9 from the airport directly to Treptower Park S-Bahn station. Please note that even though the S9 departs more frequently than the Airport Express (FEX) or regional trains, it has 10 stops so could take longer depending on your time of departure.

Purchasing a public transport ticket

You can purchase a ticket to take the train at one of the ticket machines on the platform at the airport or at your point of departure. Alternatively, you can subscribe to the 49€ Ticket valid throughout Germany on all local public transport * not valid in ICE, IC/EC.

To travel to or from the airport to the City Centre, you will require an ABC ticket.

Tickets can be paid for by cash or card, and please be sure to validate your ticket using the machine on the platform to avoid a fine. You can also use the BVG app to purchase a ticket, which we recommend as it will be automatically validated from the moment you purchase it. Further information can be found on BVG's website: <https://www.bvg.de/en/tickets-tariffs-all-tickets>.

Note also that BVG ABC tickets can be used on Regional Trains and the Berlin Airport Express (FEX) as well as on S-Bahn trains.

Car & taxi

If travelling by car, the BER terminals are easy to reach via the A113 and the B96a, and travel from the airport to BIMM University Berlin's buildings takes approximately 40 minutes.

Passengers arriving at Terminals 1 and 2 use the North and South taxi ranks in front of Terminal 1 on Level E0. Taxis can be a convenient option if you are in a hurry but will cost significantly more than taking public transport. During rush hour, public transport may actually be a faster option.

Taxi drivers are obliged to take the shortest and therefore cheapest route. A one-way fare to the centre of Berlin will cost approximately €40-80. (Please note the rate varies depending on the size of vehicle and demand of booking at the time.)

If you'd prefer to pre-book your taxi, then we recommend using [FreeNow](#) or [Uber](#). Many Berlin taxi drivers are registered to these systems. Please note prices can vary between platforms so do check ahead of your journey for the best quote.

Further information on transport to and from Berlin Brandenburg Airport can be accessed on their website: <https://ber.berlin-airport.de/en/orientation/getting-here>

Accommodation guide

Accommodation advice is offered by BIMM University Berlin's Student Wellbeing Team. We have partnerships with several accommodation providers, who will be happy to assist you and answer any questions you may have. If you find you have questions about your finances which aren't answered in this guide, then please contact the Student Wellbeing Team:

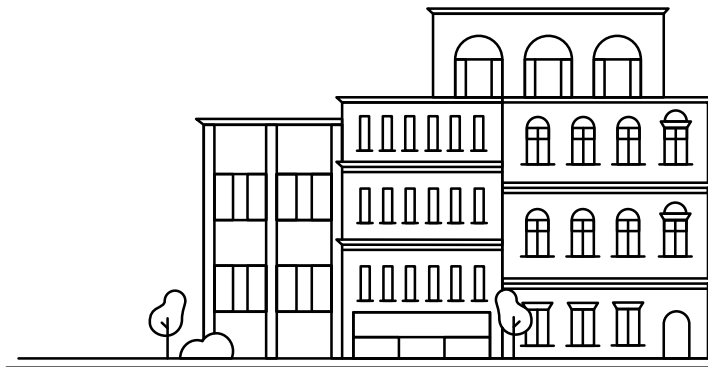
Tel: +49 (0) 30 311 99 186

Email: studentsupportberlin@bimm-institute.de

Where should I be looking?

We anticipate many of our new students will want to live within a short distance of our university buildings. You may wish to consider living slightly further away and commuting in for your studies, especially if you're already settled in Berlin. Remember that you'll need to take into consideration the cost of travelling and the time it will take to travel to BIMM University Berlin's facilities when making any accommodation decisions. We recommend the following areas, some of which are within a short commute of BIMM University Berlin's two facilities:

- Friedrichshain
- Treptow
- Kreuzberg
- Fennpfuhl
- Lichtenberg
- Mitte
- Prenzlauer Berg
- Neukölln



Living costs

It goes without saying that you should be realistic about budgeting for your time at BIMM Berlin. It's essential that you have enough money for the duration of your course.

International students may not be able to work under the conditions of their student visa. If you hold a student visa, then you should refer to the visa page of your passport for further information about any working restrictions that may apply. If you're able to work, don't assume any part-time earnings will fully cover your living costs and accommodation. Remember: your student experience is as much about your social life as it is about learning. Further visa advice can be found within the 'Visa information' section of this guide.

We advise planning how much spare cash you have for socialising and try not to spend too much in the first few weeks. Consider what you want to do in advance and how you can keep costs manageable. Have a look at top tips online for how to keep your costs down and within budget. This website <https://budgettraveller.org/?s=berlin> is useful for seeing what you can do for free in your spare time, along with cheap places to eat and other helpful tips to save money.

You can also use this website as a guideline to budget your expenses: <https://housinganywhere.com/Berlin--Germany/cost-of-living-berlin-students>



House hunting

Finding accommodation in Berlin can be competitive, so make sure that you have all your documents ready and are prepared to spend a good amount of time looking for a flat share or apartment to avoid disappointment.

There are also some important aspects to understand before you embark upon the excitement of hunting down your digs. Important documents include the following, if you are going to rent a flat as the main tenant:

- Schufa-Auskunft – this is not necessarily required for students coming from abroad, but it's always a good idea to make sure you have some evidence of your credit rating. Otherwise, anything declaring that you aren't in any debt will suffice.
- Mietschuldenfreiheitsbescheinigung – proof from your previous landlord that you have no debts relevant to your rent.
- Einkommensnachweise - proof of your income / proof of parents' income if they're renting on your behalf.
- Copy of your ID card/passport.

If you are going to rent a room in a shared flat (WG) which doesn't require you to be the main tenant, then the required documents should be discussed with the main tenant.

How much can I expect to spend?

The amount you'll pay very much depends upon the type of accommodation you choose – for example, the privacy of a one-bedroom apartment will cost considerably more than a three-bedroom flat share.

As with all cities, where you live will affect the price: opting for lodgings right next to a U-Bahn line in the centre of a key nightlife district will take more from your wallet each month than somewhere a little further out.

The following sections give some indication of the rough prices you should expect to pay across the different options.



Private lettings

Please familiarise yourself with the three different kinds of rental: Mieten means to rent or to let and refers to a direct contract between you and a landlord. Untermieten means to sub-let – renting a room from someone who themselves has a contract with the landlord. A WG, or Wohngemeinschaft, is a flat share, in which a group of people will come together to rent a property on equal terms.

The first option is the safest, as under German law anyone signing a tenancy agreement automatically gains the protection of strong rights that prevent eviction, exploitation, etc. However, taking on a tenancy will likely be considerably more expensive than the other options covered here, and bestows a number of responsibilities upon you as a tenant – there are a fair number of checks to be passed as well see the ‘What You Need to Know’ section for more information.

Mieten contracts tend to be for longer periods of time, so may not suit a student lifestyle.

Much more flexible are untermieten agreements, which are often more informal in nature and shorter in length, and frequently negotiable in terms of cost. However, you have considerably fewer rights – it is sometimes the case that the landlord might not know you’re living there. Technically, this is not allowed and the landlord can end the lease without prior notice.

Make sure you have this cleared beforehand and that there is official confirmation for a sublease from the owners of the place (plus, you won’t be able to register yourself in Berlin if you don’t have written consent). You can make sure that there is prior agreement with the landlord by looking out for the phrases “with Anmeldung” or “Anmeldung möglich”.

Perhaps the best option for students is the Wohngemeinschaft, where you would share a property with others, taking on equal responsibility and splitting costs between you.

These are very common in Berlin, and while some care is needed to ensure that you don’t end up living with people that you can’t get along with, they can be a fun and affordable option.

The European accommodation portal [WGGesucht.de](https://www.wg-gesucht.de) is a great free place to look for these, and local newspapers and community freesheets regularly advertise apartments and rooms.

Alternatively, you could sign up with one of the Mitwohnzentralen – accommodation agencies that specialise in filling rooms across the city. You can also join the BIMM Berlin Freshers Groups on Facebook Faculty to find others heading to the city who are looking for people to share with: [Freshers group Music Faculty](#) [Freshers Group Screen & Film Faculty](#)

This group is for all who start their studies in



September 2024 with useful information on induction and freshers events, Berlin city life etc.

To also get in touch with current students, you can also join the [BIMM Berlin Facebook Group](#).

You can also search for other public groups to ask about flat shares etc, such as Toytown Berlin.

Student accommodation providers

We have several partnerships with accommodation providers, all within a short distance of our campus.

Let them know that you're studying with us, and they'll put you in touch with a member of their team who'll be looking after all BIMM related queries.

The Social Hub

Perfect if you're looking for somewhere short term – you can stay for as little as one week, and it's in a great central location (in between Alexanderplatz and Jannowitzbrücke). It's also possible to register for an Anmeldung at this address, which will make your life a lot easier once you arrive here. Opened in late 2019, their facilities are up to date and have lots of additional benefits for guests.

BIMM University Berlin has an agreement with The Social Hub for a small number of discounted rooms for students, please follow instructions on page 43 of the accommodation guide.

<https://www.thesocialhub.co/berlin-mitte/stay/hotel-stay/>
+49 30 3119 8339

Spotahome

With an innovative all-online approach to apartment rentals, you can find your new home in Berlin without leaving your sofa! Note that there's a service-fee attached for the use of Spotahome's platform, however with features including virtual tours of properties this may be useful when searching for accommodation before your arrival in Berlin.

www.spotahome.com

The Home in Berlin

With a building just twenty minutes away from BIMM University Berlin's Friedrichshain location, and a short journey further to the Treptow location, the Home in Berlin provide modern student houses in seven locations across the city with all the amenities you could possibly need. This may offer you convenient flexibility to decide on living in an area of town that is more to your liking:

<https://home-in-berlin.de>
+49 (0)30 49 10 220

HousingAnywhere

Are you looking for a room?

To help you find and book your new home abroad from trusted advertisers, BIMM recommend HousingAnywhere, the international booking platform for student accommodation.

Sign up [here](#) to receive:

a) A 20% discount on your booking fee.

b) A partner student badge that grants you priority access to all rooms.

c) Real time notifications on any new room available.

d) Priority support at vip@housinganywhere.com.

Going abroad?

You can also [rent your room](#) to an incoming student.

Home & Co

A new provider in Berlin with three locations. We provide a home for young, open-minded people, one that promotes a sense of belonging while creating a space for lively communication and exchange. Find tranquillity in your own four walls, or meet up with others in our large community spaces.

<https://www.homeand.co>

FRENDZ Living

FRENDZ Living offer students and young-professional purpose accommodation in various locations in the centre of Berlin. Rooms are private, with modern amenities and a simple booking process guaranteed to cause minimum stress.

www.frendzliving.com/locations



BIMM Institute

Get 25% off the reservation fee on spotahome.com with the code

BIMM25

How to use your promo code

- Once you have found your perfect home, fill in your personal data. Then click on Next Step.
- Include some additional details to provide the landlord with some extra information. Click on Continue.
- Select your payment method, then enter your code at the bottom box to get your discount. Finally, submit it.

Who we are

Spotahome is the safest way to book mid- to long-term accommodation in Europe, directly from your mobile phone.

The homes advertised on our site are personally visited by one of our Homecheckers, professional photographers who take high-quality photos, create an HD video tour, detailed floor plans and honest descriptions of the property and neighbourhood.

The most complete property listings mean that you can view, choose and book your property directly online, and enjoy a discount on the booking fee with your partner promo code.

How it works

1. Choose the city, move in and move out dates.
2. Find the home that suits you best and click on "Book Now".
3. Complete all the details in the Booking Form and enter the promo code on the payment page (step 3) to get a discount on the booking fee.

The money will only be debited from your account when the landlord accepts your booking.

How the Booking Process works

Once the booking request has been submitted, we will forward it to the landlord, who has 24 working hours to respond.

When the landlord accepts your booking, we will confirm it to you via email and share your details with them and vice versa. At this time we will also take payment for the first week's rent and booking fee automatically.

If the landlord does not accept your booking, we will offer you similar accommodation options or alternatively you may also choose a full refund.

Move-in Policy

Once you arrive in the property, you have **24 hours to notify Spotahome** in case of any significant deficiencies or any inaccuracies in the listing. Spotahome will then work to remedy the situation.

Housing Anywhere

To book your accommodation in Berlin before your arrival, BIMM Institute recommends HousingAnywhere, the international housing platform for mobile talents.

Through HousingAnywhere

you can safely book your new room, offered by verified private landlords and by outgoing students.

To receive a 20% discount on the booking fee, a VIP profile and priority access to the listings in Berlin, sign up here: <https://housinganywhere.com/Berlin-Germany/BIMM-Berlin/sign-up>

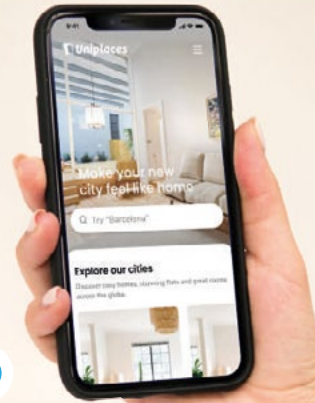
NB. First you will have to pay the entire price and then email support@housinganywhere.com to have that amount back. You can find information about finding your new place on the how it works page. Do you need more information or have a specific question? Send an email to vip@housinganywhere.com.

SCAN HERE TO GET A 20% DISCOUNT ON THE BOOKING FEE

partners@spotahome.com
spotahome.com



Discover cosy and stunning flats to great rooms across the globe
Rent a room in unique places.



Try "Lisbon"

Move-in

Search

The countdown to your next challenge has begun

Thousands of rooms, flats and residences in more than 40 cities all over Europe, the USA and Australia, only one click away.

uniplaces.com

Talk to an agent and book your room

Scan the QR Code. Fill the form and one of our Bookings Agents will do the search and quickly find you a home.



Student Stay

Berlin



So, what's the deal?

Our all-inclusive, fully furnished rooms include:

- Private en-suite bathroom
- Large comfy bed
- Monthly housekeeping
- Free unlimited laundry
- Study desk
- Flat screen TV
- Fully equipped kitchens
- Access to study & workspaces
- Fast free Wi-Fi
- Gym access & bike rental
- 24/7 reception & security
- Game & chill out areas
- Wellbeing programme & mentor
- Hotline for immediate counselling
- unlimited mental health support by OpenUp
- 1 free night at any TSH hotel
- Access to social working spaces at all TSH locations
- 1 free parent's night

Join our complete connected community

Need a place to stay during your study? We've got you covered! Whether you're in town for a semester, a full academic year or 12 months - our fully equipped student rooms, bold communal spaces and bustling community is at hand to help you learn, stay, work and play in style - just minutes from all the action.

Got a question?

Get in touch. Email our reservations team at reservations@thesocialhub.co or call +31 20 760 7575.

Booking couldn't be easier!

1. Go to www.thesocialhub.co/book-student-room/
2. Enter **PR-BIMM24/25** > Apply
3. Select **'Germany', 'Berlin'** and the semester period will show up > Continue
4. Select your room
5. #welcometoyournewhome



Fun Fact: Did you know you can book an online tour and say hello? We understand you might be far away, and still want to view the location before making a decision. So plan a free viewing with one of our staff members who will give you a one on one video call tour of the hotel, reserve a time at thesocialhub.co/semester-tours

***T&Cs:** Booking a room with us is subject to our Terms & Conditions & House Rules. Please read those carefully before booking. You may find them here: thesocialhub.co/terms-conditions



amber

BIMM University's Accommodation Partner

Our accommodation partner, Amber, is a long-term accommodation booking platform for students. They assist 80 million students from all over the world.

Amber services all our campus locations to ensure that you have access to the best living spaces in the city.

The organisation helps remove some of the stress of searching for accommodation, as you'll know that all options are safe and comfortable.

What can you expect?

Prime locations

Our properties are conveniently located close to campus and local amenities.

Comfortable living

Enjoy well-furnished and fully equipped spaces that are designed with students in mind.

Affordable options

We offer a range of budget-friendly choices to suit your financial needs.

Safety first

Your security is our priority; our properties are equipped with modern safety features.

Peace of mind

Our exclusive properties are verified, and price match guaranteed.

Early bird offers

Take advantage of rent reductions by booking early and unlock savings on moving and lifestyle expenses like restaurant charges, luggage fees, gym memberships and more.

Amber helps our students to find and book full-time accommodation near our campuses, without the hassle of negotiation, excessive paperwork and payment issues. We look forward to partnering with them for many years to come.

Accommodation providers and letting agencies

Student purpose accommodation

No.	Agent	Website	Price range
1	The Social Hub	https://www.thesocialhub.co/stay/student-stay	€999 per month inclusive of BIMM discount/ €1662 without discount
2	Neon Wood	http://neonwood.com	€995+ per month
3	StayToo Berlin	https://www.staytoo.de/en	€729 - €899
4	Home in Berlin	https://home-in-berlin.de/en/	€879+ per month
5	Smartments	https://www.smartments-student.de/en/	€660+ per month
6	Home & Co	https://www.homeand.co/	€549 - €1220
7	Frendz Living	https://www.frendzliving.com/	€899+ for single apartments
8	The FIZZ	https://www.the-fizz.com/en/student-accommodation/berlin/	€1,300+ per month
9			
10	Boarding House Berlin	https://www.boardinghouseberlin.com/	€1040
11	Urban Base - Living House Berlin	https://urban-base.eu/en/berlin/	€519+ per month (Shared room)
12	66 Monkeys	https://www.66monkeys.de/en/locations/	€850+ per month



Please note that the following agents have not been visited or vetted by BIMM University Berlin and you should therefore use them at your own risk.

General lettings and accommodation search platforms

Agent	Website	Rates from
Spotahome	www.spotahome.com	€370
Uniplaces	https://bimm.uniplaces.com/	€350
HousingAnywhere	https://housinganywhere.com/Berlin--Germany/BIMM-Berlin/sign-up	€400
Berlin99 Property	http://berlin99.com	up to €1895
Home Company	http://berlin.homecompany.de	€720
Home for rent	http://homeforrent.de	€720
Xpat Rentals	http://xpatrentals.com	€670
Immonet	http://immonet.de	€330
Coming Home	http://coming-home.org	€950
Null-Provision	http://null-provision.de	€400
Wohnungsmarkt	http://wohnungsmarkt24.de	€540
Immobilien Scout 24	http://immobilienscout24.de	€360
WG-Gesucht	http://wg-gesucht.de/en	€350
Immo welt	https://www.immowelt.de	€400
Amber Student	https://amberstudent.com/landing/bimm-1705071570	€1600+

Please note: Due to recent changes in Berlin local legislation regarding subletting private holiday and temporary apartments (private Ferienwohnungen, Airbnb etc) please be aware that this might affect some offers, so it is best to enquire beforehand if the apartment has been registered.

* You can also email bookings@uniplaces.com. There is 25% discount on the service fee if you use the code UP20BIMM21 online.



House viewings tips

Tips for viewing properties

- Take someone with you or let someone else know exactly where you're going when you go to visit a property, just to be on the side of caution.
- It's also a good idea to visit the area at night. If you do this, please ensure you stick to the point above and take someone with you.
- Make sure you and all your other housemates view the place. Don't take someone else's word that the property is right for you.
- Compare a range of different landlords and properties.
- Don't let landlords/agents pressure you – if you don't have a good feeling about it, look for other options.
- When you go to view, take notes and photos, and use our checklist to make sure you don't miss anything.

What to look for in viewings

- Does the place look well maintained?
- Will it be warm enough?
- Will it be safe and secure?
- Does it have the space and facilities you need?
- Are the current tenants happy with the landlord?
- Is the property affordable and good value?
- Is the area suitable?

Extra fees to consider

- Drawing up contracts.
- Administration charges.
- Reference fees.
- Inventory fees.



Accommodation FAQs

Will I need to sign a contract to rent a room?

Most landlords and agents will ask you to sign a tenancy agreement. This is a legal document that sets out each party's rights and responsibilities. It contains rules set by the landlord, as well as the legal terms and conditions that both parties must abide by, which cannot be overwritten by the landlord. Before you sign, make sure you understand all the clauses, so there can be no nasty surprises when you move in. If you do not sign a tenancy agreement, you do so at your own risk.

I've heard I have to register my accommodation – is that correct?

Anyone who wants to stay in Germany for longer than three months – including EU/ EEA citizens with freedom of movement within Europe – needs to register their residence (or Anmeldung) at an Einwohnermeldeamt (or registration office) within two weeks of moving in, or you risk a fine. Alternatively, you can book an appointment for a later date through their online system. Make sure you book this within the two-week notice period and keep the booking receipt as proof.

There is high demand on the registration offices in Berlin, so if no appointments appear, don't panic, as there will be others in a similar situation. During peak periods, we recommend checking each day, as there may be cancellations.

Einwohnermeldeämter can be found within a Bürgeramt, or Citizen's Advice Office, of which there are many within Berlin. Registration requires a signature from your landlord or lettings agency.

Useful documents (i.e. your confirmation letter/Einzugsbestätigung) and a link to the booking system can be found at www.service.berlin.de/dienstleistung/120686.

Do I need to hold a German bank account?

While it's possible to transfer money from an international account to a German landlord, you may find your dealings are much easier if you hold a bank account in Germany, especially if you're dealing with agents.

Having a German bank account is also often a requirement for passing a credit check, or SCHUFA-Auskunft (see www.schufa.de/en home for further details), which you'll be required to do in order to rent privately.

Do I need to pay a deposit?

Some landlords request one to two months' rent as a deposit; others the equivalent of three months – it shouldn't be more than this.

The money should not be paid directly to the landlord but instead put into a joint savings book. If no repairs or damages take place during your tenancy, your deposit should be returned to you (along with the interest it has gained) when you return your keys.

Do I need a guarantor?

There are many documents that you need when renting in Berlin. You'll typically be asked for: an application form; copies of photo ID; proof of income, such as wage slips from the last three months; a letter from your previous landlord indicating that there is no rent outstanding; and your credit report (see previous point).

If you don't have one of these, or you have just arrived in Germany and have no reliable income, then it's best to have a friend or a relative act as a guarantor. This will increase your chances of being given a contract.

Please note that some letting agents aren't too keen on letting directly to students – in some cases they will ask the student's parent(s) or guardian to rent the apartment. If in doubt, take a look at our 'House hunting' page to see exactly which documents you'll need.

What are the different types of leases?

A standard lease is between one tenant and the landlord, and it lasts for an indefinite period. On the other hand, a temporary lease has an end date that will be stated from the start, the tenant must move out by this date.

Renting procedures: what you need to know

Within shared accommodation, three options are available:

- One person assumes the role of the tenant, signing the lease with the landlord and taking on all responsibilities. They then sign a subtenancy agreement with the additional tenants.
- All or some of the tenants become head tenants, assuming the same obligations to the landlord.
- All tenants sign separate leases with the landlord to cover their own rooms.

What are the rules for ending a tenancy?

The usual notice period for both tenant and landlord in Berlin is three months. However, under German law, a tenancy can be terminated without notice if:

- The property is used consistently for non-agreed purposes
- The rent is unpaid for at least two months
- The tenant is consistently noisy or disturbs neighbours
- The letter of termination must be submitted to the landlord in the first three workdays of the month. This can change if you are living in a student accommodation facility. Please read your rent contract carefully and make yourself aware of the termination process.

What are the landlord's responsibilities?

In general, the landlord is responsible for:

- Heating and hot water installation
- Baths, sinks, basins and other sanitary installations
- The structure of the exterior of the property

- Repairs to and safety of gas and electrical appliances
- Ensuring that any furniture supplied meets fire resistant requirements

At the start of a tenancy, your landlord should provide you with an Übergabeprotokoll, which is a document that clarifies the condition of the property at that point. This will protect you against unfair accusations when your tenancy ends.

Will I need to take out insurance?

Most agents and landlords will require you to take out third-party liability insurance (Haftpflicht) and/or contents insurance for the property.

Further questions

If you have any further questions about finding accommodation in Berlin, please don't hesitate to contact our Student Wellbeing Team on +49 (0)30 311 99 186 or by email at studentsupportberlin@bimm-institute.de.

Glossary of terms

Here's a list of some common words and phrases you might come across during your house hunt:

1. *1-Zimmer-Wohnung (1 = ein)*: this indicates a one-room or studio apartment
2. *2-Zimmer-Wohnung (2 = zwei)*: this means that there are two rooms within the apartment, excluding the kitchen and bathroom
3. *3-Zimmer Wohnung (3 = drei)*: same as above, except that there are three rooms, excluding the kitchen and bathroom
4. *Warmmiete*: the cost of some or all bills is included in the rent. Make sure you double check this in your contract
5. *Kaltmiete*: bills are not included in your monthly rent
6. *Einwohnermeldeamt/Bürgeramt*: registration office. This is where you'll have to go to register your new address. If you're not too confident with your German skills, we'd strongly recommend you bring someone that is with you
7. *Meldebesccheinigung*: registration certificate. Upon moving to Berlin, you'll have to register your new address within a few weeks or pay a fine
8. *WG/Wohngemeinschaft*: shared apartment
9. *Untermiete*: sublet/subtenancy
10. *Zwischenmiete*: dual tenancy
11. *Hauptmieter/Mieten*: main renter (the person who holds the contract for the apartment)/to rent
12. *Nebenkosten*: utilities
13. *Möbliert*: furnished
14. *Unmöbliert*: unfurnished

15. *Kaution*: deposit. Generally speaking, landlords can request a deposit up to the value of three months' rent. This will be returned to you when you move out, provided that everything is in order
16. *Courtage*: commission
17. *Einbauküche/EBK*: fitted kitchen
18. *Mietvertrag*: rental contract
19. *Anmeldung*: a compulsory registration document that states where you live in Berlin and the date you moved in. This must be obtained within a fortnight of your arrival in Berlin, or you can face a hefty fine. We therefore recommend that you sort out your accommodation before you arrive. You can register for an Anmeldung appointment at your local Einwohnermeldeamt/Bürgeramt (registration office).

For more helpful information on relocating to Germany, check out the below links provided by HousingAnywhere:

- [Registration in Berlin](#)
- [Moving to Germany checklist](#)
- [Cost of living in Berlin](#)
- [Tenant rights in Germany](#)

Please note that BIMM University Berlin is not responsible for content featured on third-party websites and content/links may change.

Planning your move to Germany



It's important to do plenty of research and preparation before you move to Germany, as this will make your relocation much easier.

This section provides information on the legal documents that you will need, including health insurance documents and student visas, if applicable.

What legal documents will I require?

1. Registering in Germany:

If you're not already listed as a resident in Germany, please make this a priority, as it's tricky to do anything without your Anmeldung. You must register at your local Einwohnermeldeamt or Bürgeramt (registration office) within 14 days of arrival – appointments can be made months in

advance, so make sure you get this box ticked as soon as possible!

2. Health insurance

Take out a health insurance policy or double check that your current insurance works abroad. It's a legal requirement to be insured in Germany, and you can be hit with a hefty fine if you are not. Further information can be found within the 'Health insurance' section of this guide.

3. Student visa

If applicable, you will need to apply for an up-to-date student visa. Our Admissions Team at BIMM University Berlin can provide you with evidence stating that you are due to enrol as a student with us, which can be used to support your visa application. However, this

can only be provided once you have returned your signed Education Agreement and paid your deposit – if you have any questions about this, please contact our admissions department directly at admissions@bimm-institute.de.

Details of the process of applying for a student visa can be found on the 'Visa information' page.

4. Bank account

To make your life a little easier here, you might want to open a German bank account. Whilst it seems a little daunting, it's relatively easy – although if you decide to go for a high-street bank, you may need to bring a German-speaking friend with you to your appointment if you aren't confident in the language.

To open an account, you will generally need the following:

- A valid government-issued photo ID or passport
- Confirmation of your registration (Anmeldung)

It may be quicker and more practical to open an online bank account, with a provider like N26. Some online banks do not require an Anmeldung and could be a good option when you first arrive. Please note that they will need a valid government-issued photo ID to verify your identity.

5. SCHUFA (credit score)

It's always wise to get a SCHUFA (credit score) if you're looking to enter into any form

of contract (for example, a rental agreement or phone plan).

It's essentially a report stating that you have (or haven't!) paid all your bills on time. It's created as soon as you get an Anmeldung and only applies within Germany – your credit score from your home country won't affect your SCHUFA here.

The easiest way to get hold of yours is to order a Schufa Bonitätsauskunft from www.meineschufa.de, although it can take a few weeks to be processed.

6. SIM card/phone contract

While it's of course not legally necessary, you may want to get a German SIM card for your phone in order to cut down on costs. If your phone is locked to your current network, then you can ask your service provider to unlock your phone and allow another SIM card access for a relatively small fee.

There are numerous pre-paid and contract options, and we recommend using a service like [Check 24](#) to compare plans and find one that is the most suitable and cost-effective.

Of course, different regions have different legal requirements, but at the time of printing all the information here is up to date. If you have any questions, we'd advise you to contact your local council or embassy to see if they need any additional documents.

Visa information

EU, Swiss or EEA students

If you are an EU, Swiss or EEA student, you can move to Germany and begin your studies at BIMM University Berlin without a visa. All you need to do is register with the local authorities within two weeks of your arrival to let them know you're here.

Non-EU students

If you are a non-EU student, it is likely that you will require a visa to study at BIMM University Berlin. Find out in good time whether you need to apply for a visa to enter Germany for university study.

You can get immigration and visa support throughout your time with us – from when you first apply all the way to graduation. We recommend that you apply for a student applicant visa immediately after you receive confirmation of your applicant status. This way, you can enter Germany in time for the beginning of your studies.

Working while you're studying can help you engage with the creative industries throughout the semester or during holiday periods. Earnings from part-time employment can also go towards your living costs. Germany offers positive terms for international students. During your studies in Germany, you are generally allowed to do 120 full-days or 240 half-days of paid work and take small student jobs. In exceptional circumstances, your local foreigner's office may add further conditions which they will outline during your appointment.

Visa application process – before you arrive in Germany:

For the visa, the German diplomatic mission checks whether you plan to study a qualification recognised in Germany, and also whether you have a valid passport and sufficient financial resources (minimum of €906 per month) to study in Germany. The German diplomatic mission then requests authorisation from the relevant foreigners' department.

Documents will need to be presented for your visa application:

1. A passport or government-issued ID card
2. A recent biometric photo
3. A completed Antrag auf Erteilung eines Aufenthaltstitels form: This form name means 'Application for Issuance of a Residence Permit' and is only required for first-time visa applicants. You can access this form in various languages via this link: <https://service.berlin.de/dienstleistung/305244/en>
4. Proof of secure livelihood: German immigration rules require students to prove they have access to funds to support them during their studies. This can include the following:

A. A Blocked account (Sperrkonto) at a German bank. This is the most common approach taken by students, and you can open a blocked account with the below banks:

- i) [Expatrio](#)
- ii) [Fintitba](#)

Please note that the deposit balance in your blocked account must be at least €10,872.00. This is required for your first year of studies only. You will be able to unblock the account after your arrival. You will need to have a current bank account, an address in Germany, and a German visa or resident permit. Once it has been approved, you'll be able to withdraw from the balance monthly.

The account may only permit the withdrawal of a certain amount per month (this is currently 934 euros for students). For more information, please check with your nominated bank.

From your second year of studies onwards, this blocked account balance of €10,872.00 is no longer required, but the immigration office may ask to check your bank balance as part of their ongoing visa review process.

B. Submission of a declaration of commitment by a third party on an official form. This can apply if you'll be receiving funding from your own country or home government, or if you have your fees and living costs secured by another person.

C. Scholarship. If you have been granted a scholarship that also subsidises or covers living and accommodation costs, you'll need to provide proof of this. If your scholarship only covers your tuition fees, further evidence of secured livelihood may be required, such as the blocked account listed in point A.

D. Declaration of financial support from your parents or family. This is a notarised/signed declaration from your parents to secure your livelihood for the duration of your studies, including proof of your parents' income in the last six months. This document may need to be signed or proofed by a solicitor or lawyer, or the signing of it witnessed. Your advisor at the German mission will be able to advise further.

You must also provide additional documents proving that you have been accepted onto a course at BIMM University Berlin. You can request these from our Admissions Team.

5. Course confirmation letter. This letter details the start and end date of your studies, as well as the credits for each year of passed and completed study.

6. Anabin educator registration. This is a supporting document demonstrating BIMM University Berlin's recognition as an educator on the Central Office for Foreign Education (ZAB) database.

Further information on applying for a student visa, and a list of overseas German embassies, can be found here. Alternatively, search online for the Auswärtigesamt or German Federal Foreign Office.

Visa extension application process

After a successful initial application, you will be issued a student visa for three months, which will allow you to enter Germany, enrol at BIMM University Berlin and prepare other documents for the extension of your student visa.

These documents will need to be presented for your visa extension application:

1. A passport or government-issued ID card
2. A current biometric photo
3. Proof of secure livelihood
4. Proof of health insurance valid in Germany
5. A certificate of enrolment or conditional approval for studying (please ask our Wellbeing Team to receive this document)
6. Proof of main residence in Berlin (Anmeldung)

For more information on the documents and costs, please visit the official page of the immigration office [here](#).

It should be noted the process can take up to 90 days, so we recommend getting started as early as possible. Please note also that having valid health insurance coverage is a condition of being issued a visa. Further information can be found in the 'Health insurance' section of this guide.



Health insurance

Health insurance is a legal requirement for all residents in Germany, including students. Some students will automatically be insured under their family's policy (generally those under 26 years old with German nationality/residence), or via Europe's European Health Insurance Card (EHIC) scheme.

You will need a health insurance policy that covers the duration of your studies in Germany. It is illegal to not have health insurance coverage, and for non-EU students this can constitute a violation of your visa requirements. Thus, once you receive an acceptance letter, contact a health insurance provider immediately and get yourself insured.

General health insurance information

Depending on the country you are coming from, your age, your existing health insurance policies in your home country and/or what your home health insurance covers while you are studying internationally, the options available to you are variable. Therefore, when looking for private health insurance, make sure that your policy will cover you as a student studying at BIMM University Berlin.

Health insurance options

Public health insurance:

We also have agreements with two German public health insurance companies, Techniker Krankenkasse (TK) and Allgemeine Ortskrankenkasse (AOK).

All students at BIMM University Berlin are eligible for cover by TK or AOK health insurance. BIMM University Berlin students pay the same fees as students at state-accredited universities. Therefore, if you take out health insurance with TK or AOK, you can be reassured that you are receiving comprehensive coverage at a fair price. Current information for students, including monthly fees, can be accessed on TK's and AOK's websites. Both TK and AOK's offices can be contacted directly, and their staff will help you arrange health insurance at the statutory student rates:

Techniker Krankenkasse (TK):

Gunnar Loewenstein: gunnar.loewenberg@tk.de

Allgemeine Ortskrankenkasse (AOK):

Karina Braune: karina.braune@nordost.aok.de

Private health insurance:

The German comparison website Check24 offers a useful function to review private student health insurance:

<https://www.check24.de/private-krankenversicherung/studenten/>

Recommended private health insurance providers offering student coverage are:

- Hanse Merkur
- Signal Iduna
- Münchener Verein

Insurance brokers, such as [Niedner & Co.](#), are also available to help with arranging health insurance. These may be a better option if you have specific requirements.

Expat health insurance:

Expat health insurance may be a convenient and cost-effective option if you are planning to move to Germany from outside of the EU and require proof of insurance coverage to support your visa application.

Please note that Expat insurance is limited to your first visa and has a maximum term of five years. It is therefore not a long-term solution, and we recommend arranging private insurance coverage.

Online insurance broker Feather Insurance has a useful quote tool: <https://feather-insurance.com/expat-health-insurance>

Alternative proofs of health insurance:

Students with European health insurance:

If you have a European Health Insurance Card (EHIC) or a UK-issued Global Health Insurance Card (GHIC), you can enquire about the possibility of extending this to cover your studies in Germany from the health authority in your country. On most occasions, coverage by EHIC or GHIC is possible for a small number of years and does not cover access to certain types of ongoing treatments to the extent of a German insurer.

We therefore recommend taking out insurance with a German-based provider who will offer you comprehensive coverage during your stay.

Feather Insurance has a useful guide on the eligibility of EHIC as a student in Germany, <https://faq.feather-insurance.com/en/articles/29608-what-is-ehic-european-health-insurance-card>.

German nationals/residents with existing health insurance:

Most students with German nationality/residency, and who are under 26 years of age, will be covered under their family's health insurance.

It is advised that students aged 26 years or over apply for private health insurance from one of our recommended providers.

Some important information

- Travel health insurance will not provide sufficient coverage for a permanent stay in Germany.
- Expat health insurance is typically limited to your first visa and has a maximum term of five years. It is therefore not a long-term solution. We recommend checking out the guidance on Expat Insurance on [Feather Insurance's website](#) for further advice and limitations of coverage, and to receive a quote.
- Please make sure that your health insurance covers all health risks, as there are high treatment costs that you'll have to bear if they are not covered by your insurance.
- Study in Germany have additional useful information about health insurance for international students, which you can access on the [Studying in Germany website](#).
- Students who are currently insured in a European country are exempt from the insurance obligation as a rule. Contact a German public health insurance provider to have the exemption confirmed. The GKV website provides a list of public health insurers with whom you can verify this: <https://www.gkv-spitzenverband.de/>.

How to find a GP (Hausarzt)

In Germany, you can simply make an appointment with the nearest GP (Hausarzt) to your place of residence. To find a GP or any other specialist, you can use these links:

- <https://www.jameda.de/arzt suche>
- <https://www.doctolib.de>



Essential equipment

Regardless of course level, we advise that you have the following equipment ready for the start of your course.



Bass

- Bass, lead and tuner
- Metronome/Metronome app (Pro Metronome)
- Headphones and 1/4 jack input adapter
- Stationery & manuscript paper
- Ear plugs



Guitar

- Guitar, lead and tuner
- Metronome/Metronome app (Pro Metronome)
- Headphones and 1/4 jack input
- Stationery & manuscript paper
- Ear plugs
- Capo, Slide
- Various plectrums



Vocals

- Microphone and lead
- Metronome/Metronome app (Pro Metronome)
- Stationery and manuscript paper
- Ear plugs



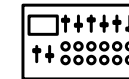
Songwriting

- Laptop or Computer
- Metronome/Metronome app (Pro Metronome)
- Stationery and manuscript paper
- Ear plugs



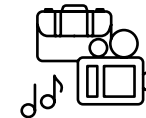
Drums

- Sticks – several good quality pairs (7A-2B weight), brushes (wire retractable), hot rods, mallets etc., all in a stick bag.
- Metronome/Metronome app (Pro Metronome)
- Practice pad – one that you can use on its own
- Headphones and 1/4 jack input adapter
- Stationery and manuscript paper
- Ear plugs



Music Production

- Computer
- Audio Interface
- DAW (Digital Audio Workstation)



Music Business, Filmmaking, Acting and Games

BIMM University Berlin recommends students have:

- A laptop or tablet device with wireless capabilities for inclass research and other tasks.
- Dictaphone or recording app on your phone.
- Filmmaking students are advised to purchase an external hard drive (USB-C type with minimum 500GB capacity recommended)
- Acting students are advised to bring comfortable, neutral clothes (black training trousers, white t-shirts, training shoes etc.) and a neutral formal shirt for head-shots or similar.

All music students are strongly advised to wear ear protection in class when practising or performing. BIMM University Berlin supplies ear-plugs, but you may prefer ordering your own.

Student perks & discounts

Being a student at BIMM University Berlin brings with it a variety of perks and discounts. These range from discounts with manufacturers, thereby ensuring you have access to the best resources to support you with your creative work, to local services that may make your stay more enjoyable, such as cafes and language schools.

As a student at BIMM University Berlin, you'll benefit from a number of local discounts. Below are some examples of the perks you'll enjoy as a BIMM University Berlin student.

Adam Audio

Adam Audio are one of the most popular manufacturers in professional studio monitors. Used in a huge number of studios around the world, Adam studio monitors are amongst the most dependable and desirable audio monitoring tools available.

Ideal for both professional and home project studios, Adam's monitors are built to deliver high-quality sound you can trust, and BIMM Berlin students can access an incredible 25% discount on all Adam Audio products!

Shure

With a history of innovation that began in 1925, Shure has turned a passion for making great microphones and audio electronics into an obsession. Shure continues to set the worldwide industry standard for superior, reliable products.

Iconic performers, leaders, and communicators trust Shure to deliver their messages clearly for all to hear.

From microphones to headphones, and conferencing gear, Shure makes products that help define sound. The company takes equipment issues out of the audio equation so that people can concentrate on their message or performance with confidence.

BIMM University Berlin students can get a 25% discount on products at Shure.

Spotify

BIMM University Berlin students receive a student discount when signing up during their semesters.

Apple education discount

BIMM Berlin students have access to savings on Apple software and hardware, such as discounts on a new Mac or iPad with Apple education pricing.

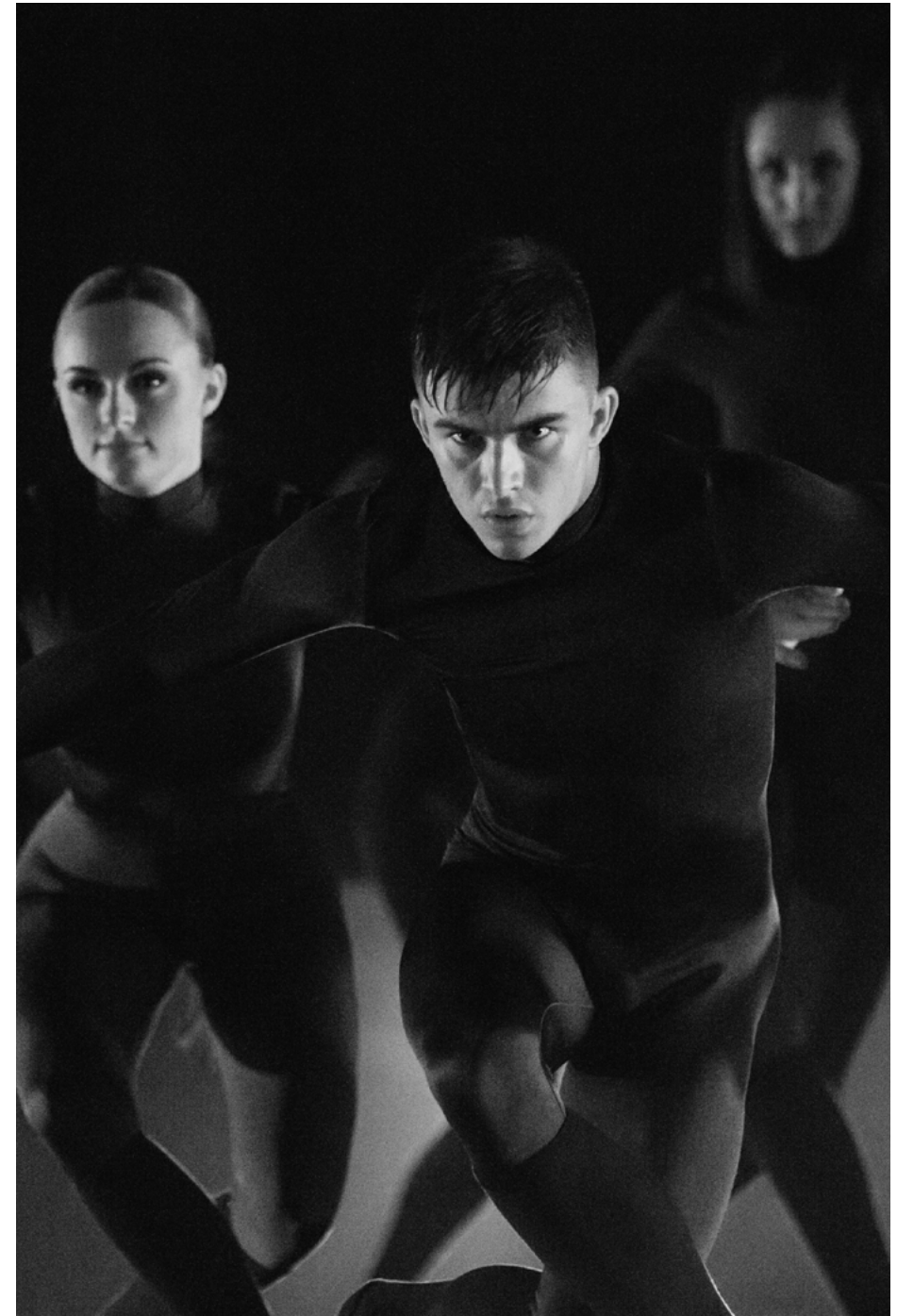
Ableton

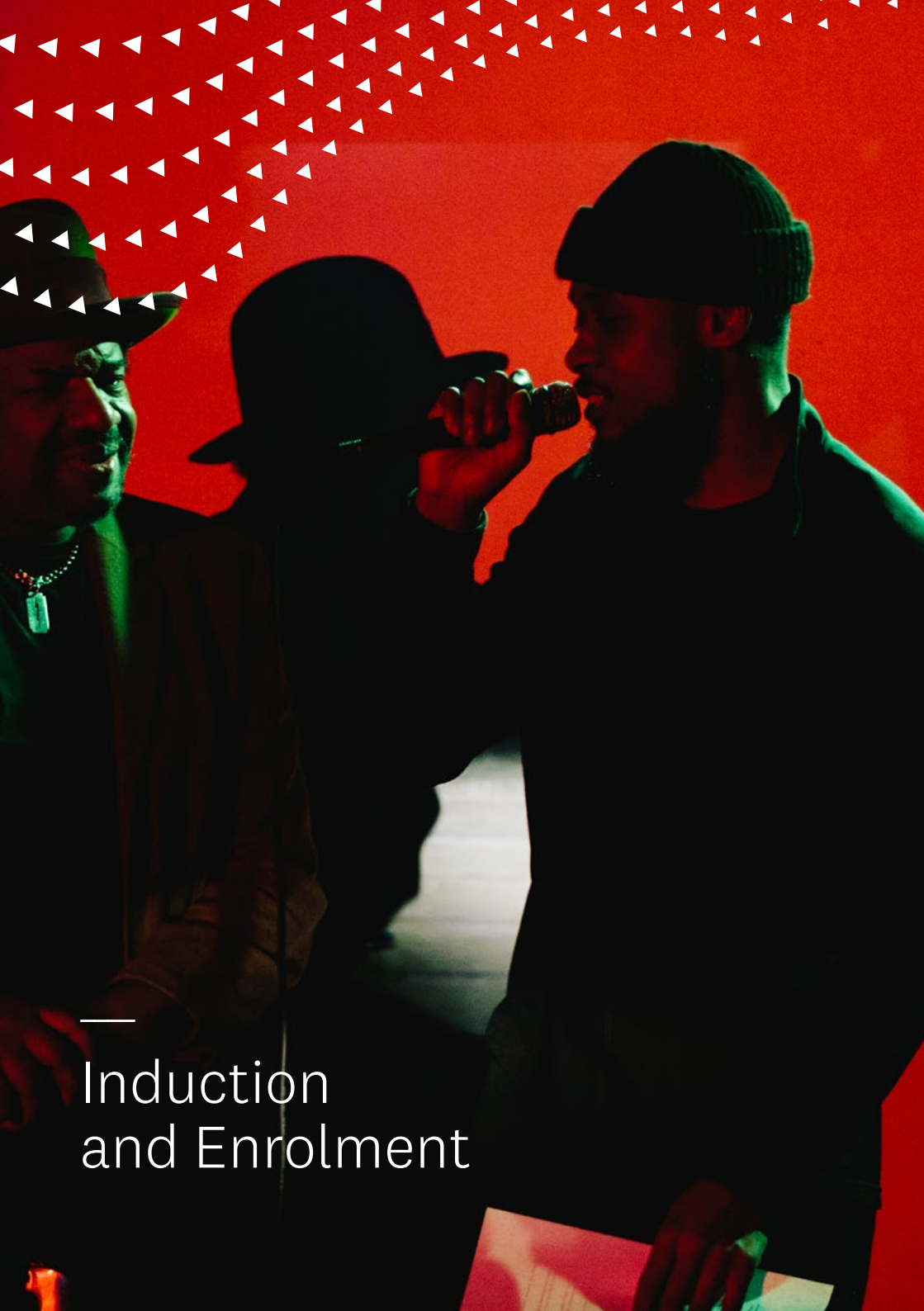
Ableton makes Live, Push and Link – unique software and hardware for music creation and performance. BIMM University Berlin students are eligible for an educational discount at Ableton, and all students receive a 40% education discount on Live Standard or Suite.

FitX

BIMM University Berlin students get access to discounted rates with FitX, Germany's largest network of fitness studios.

For further information please check our Sharepoint page [here](#). Access is available to enrolled students only.





Induction and Enrolment

To study at BIMM University Berlin, you will need to complete enrolment. You will be sent instructions on how to enrol via email. There are three stages that you'll need to complete before you become a registered student:

Stage 1 - Enrolment form

Complete the enrolment form and upload essential personal information. You must complete the enrolment form before you can begin studying on your course. Further information on how to complete this stage will be sent directly to you via email.

Stage 2 - Tuition fees

We will confirm your tuition fee arrangements. If your deposit isn't paid and you have not confirmed how you plan to pay your tuition fees, you will be unable to complete enrolment.

Stage 3 - Logging in to BIMM systems

The last stage of enrolment is making sure you have access to the applications and systems you will use daily as a student. We will issue you with your IT credentials and show you the student portal, where you'll find all the applications you need.

Induction & Freshers'

Closer to the start of the course, BIMM University Berlin will contact you with induction and freshers' information. Look out for this in your inbox and on social media platforms. Some of the events offered to you will be compulsory, and others will be more informal events. Make sure you take full advantage of the activities and events that we are putting on for you.

Induction events will provide important information about your course, and they will give you the opportunity to meet your course leader and your future classmates.

Semester dates

You can check the dates of your course here: <https://www.bimm-institute.de/term-dates/>.

Please find the German public holiday dates below and note that BIMM University Berlin will be closed on these dates:

2024

Day of German Unity: 3rd October 2024
Christmas Day: 25th December 2024
Boxing Day: 26th December 2024

2025

New Year's Day: 1st January 2025
International Women's Day: 8th March 2025
Good Friday: 18th April 2025
Easter Monday: 21st April 2025
Labour Day: 1st May 2025
Ascension Day: 29th May 2025
Whit Monday: 9th June 2025

Useful contacts

Our Enrolment Support Team is available to troubleshoot your enrolment process at all stages. If they cannot help, they will direct your enquiry to the appropriate team who can. Call them on (+49) 8006648501 or email enrolmentsupport@bimm-institute.de

Our Admissions Team will support you with any aspects of your application journey. They'll contact you if there are any pending academic or English language requirements that you need to fulfill your conditions for study. Email them at admissions@bimm-institute.de

Our Information Hub Team, located at the Berlin Reception, can provide you with supporting documents that you may require for funding or housing purposes. Email them at berlinreception@bimm-institute.de

Our Student Wellbeing Team is always on-hand to support you with any academic, accommodation, visa, learning support or wellbeing matters. Email them at studentsupportberlin@bimm-institute.de

Our Finance Team can be contacted if you have any questions on your tuition fees or funding arrangements. Email them at financeenquiries@bimm.co.uk

Online enrolment for your course

All students are required to complete enrolment. You will have been sent an email with a link to the enrolment portal, which will guide you through all the required processes. Below are a list of things that must be completed before you can start the course:

Enrolment form: This must be completed in full and submitted. The link to this form will have been sent to you by email.

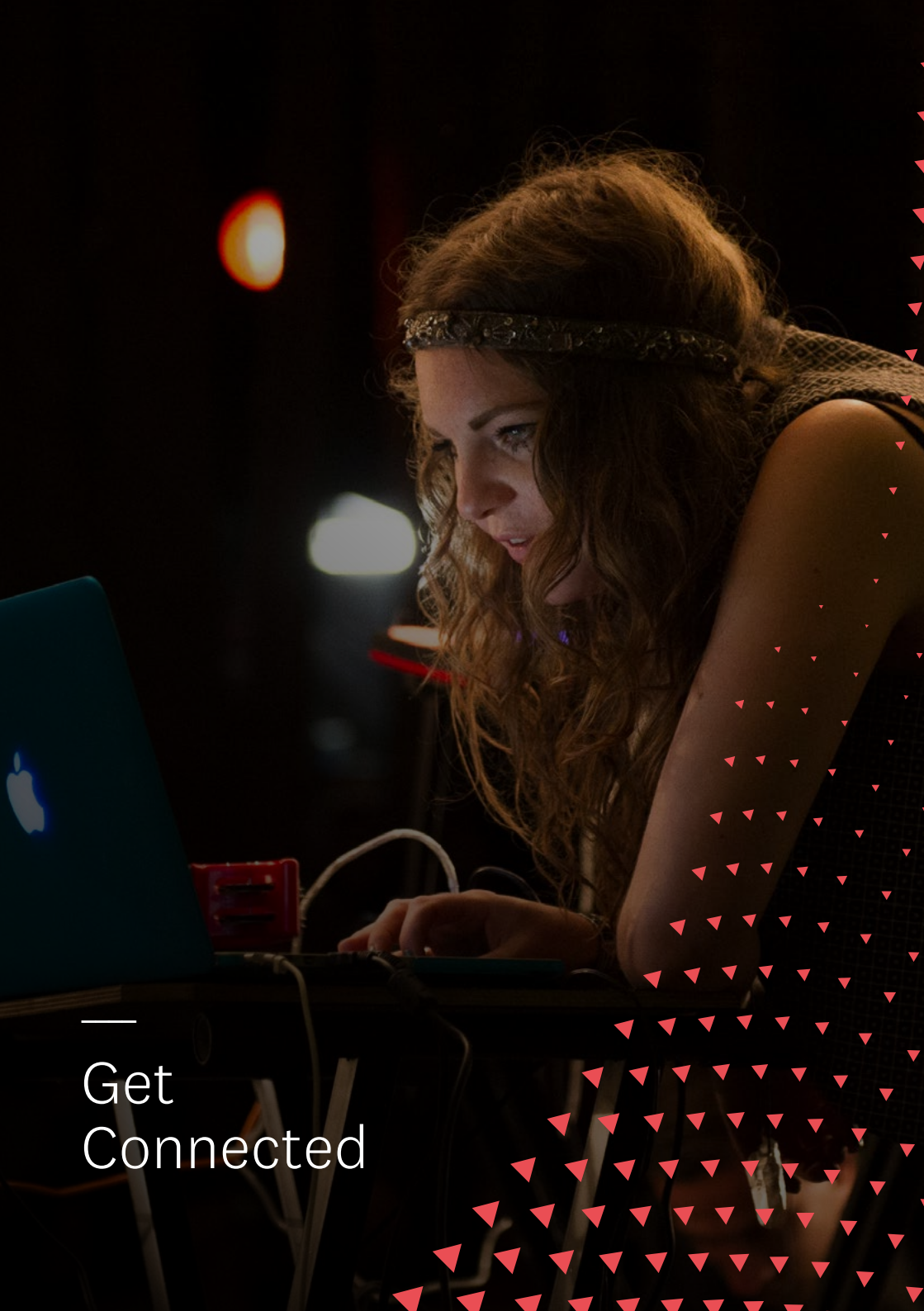
Passport style photo: This will be used for your student ID card. Please follow the guidelines on the enrolment form. You will not be able to enter BIMM Berlin buildings without an ID card.

Proof of ID: We require proof that you have the right to study in Germany. Ideally, this will be a valid government-issued passport or ID card.

Proof of health insurance: It is mandatory to have Health Insurance in Germany. Please make sure that you have this sorted before you start your course. For more information see the 'Health insurance' Section in this guide.

The online enrolment form must be completed in full before you can become an enrolled student at BIMM University Berlin.





—
Get
Connected

Networking events

BIMM University Berlin regularly holds networking events, which are a great opportunity to get together with other students from different courses that have similar musical interests. Not only is it a great way to find new friends, but it's also a good place to start connecting with industry professionals, as this will open up future work experience opportunities and allow you to showcase your creative projects.

BIMM gigs and showcases

Once your studies begin, you are welcome to participate in BIMM University's various showcases throughout the year. These events range from live screenings to performances, and they often take place in unique and flagship venues in Berlin. Showcases present a unique platform for students to present their work to their peers, friends and families, as well as industry guests who we invite along to curate the lineup and programmes.

Student societies

If you would like more opportunities to connect with people, we strongly recommend you to join one of the BIMM University Berlin student societies.

Our societies are all student-led communities that organise events and gatherings, through which you can get to know other people who have the same interests as you. More information can be found here: <https://bimmnet.sharepoint.com/sites/BIMMBerlinStudentAssociation>

Careers & industry

The Student Events & Community Team can help springboard your creative career whilst studying at BIMM University Berlin. The team works closely with students on an individual basis to help define and nurture their career goals. They also provide opportunities for students to get out of the classroom and experience the industry in a real-life setting.

There are numerous exciting work placements on offer, and students can book tutorials for guidance on their creative ventures. We encourage all students to book a tutorial and get involved as soon as their studies begin.

Student Events & Community Team:
eventsandcommunity@bimm-institute.de

Careers Team:
careersberlin@bimm-institute.de

Freshers Guide



Mentors

If you would like to have somebody to help you settle at BIMM and Berlin in general, you can sign up for having a mentor. Mentors will provide individual support at the start of the course and throughout the first year of study. Mentors are selected and trained to ensure that they have the skills and knowledge necessary to support people who might be daunted by some of the obstacles they face during their transition. More information on this will be given around the time of enrolment.

As a Student Rep, you will be the spokesperson for your cohort. This means you will need to attend meetings with your course leader and share the feedback that you have gathered from your peers on all areas of BIMM life. You'll also be responsible for informing your cohort about the discussions and outcomes of the meetings.

More information will be given on how you can register your interest after enrolment.

Induction & freshers week

Student representatives

If you want to be more actively involved in making your student experience the best it can be at BIMM University Berlin, you should consider becoming a Student Rep.

This is a fantastic way to influence decisions in collaboration with the staff at BIMM, and it is also great for meeting new people, developing your skill set, and making your CV just that little bit more impressive. Student Reps are elected from the first semester, and the role lasts for one calendar year.

Not to be missed, the Induction & Freshers Week events take place in the two weeks prior to the start of Semester 1. The week is packed full of activities organised by BIMM University Berlin's Student Association, as well as by the Events & Community and Wellbeing Teams. Events can include masterclasses with industry guests, city tours led by Student Reps, and networking sessions with students across all course areas. You'll receive information on these events and activities around the time of enrolment.



University Information & Useful Contacts

Student cards

You will be issued with a BIMM student card and lanyard at the start of your course. ID cards need to be worn at all times when on site.

We also advise that you register for the Unidays Student Discount app or purchase a TOTUM card.

Useful contacts

BIMM UNIVERSITY BERLIN

Information Hub phone: +49 30 311 99 186 (international)

GENERAL ENQUIRIES & INFORMATION HUB

Email: berlinreception@bimm-institute.de

STUDENT WELLBEING TEAM

Email: studentwellbeingberlin@bimm-institute.de

ADMISSIONS TEAM

Email: admissions@bimm-institute.de

STUDENT EVENTS & COMMUNITY TEAM

Email: eventsandcommunity@bimm-institute.de

CAREERS TEAM

Email: careersberlin@bimm-institute.de

BUILDINGS & TECHNICAL

Email: techsupportberlin@bimm-institute.de

IT SUPPORT

Email: itsupport@bimm-institute.de

ACADEMIC ENQUIRIES

Email: berlineducationteam@bimm-institute.de

BERLIN STUDENT ASSOCIATION

Email: bsaberlin@bimm-institute.de

FINANCE ENQUIRIES

Email: financeenquiries@bimm.ac.uk

HEALTH INSURANCE INFORMATION

Website: www.studying-in-germany.org/health-insurance-germany

Website: www.internationale-studierende.de/en/prepare_your_studies/entry_into_germany/health_insurance

BOOK YOUR REGISTRATION (BUERGERAMT) APPOINTMENT

Website: service.berlin.de/standorte/buergeraemter/

LOOK UP PUBLIC TRANSPORT

Website: www.bvg.de/en

FIND YOUR LOCAL GP HERE

Website: www.jameda.de/arztsuche
<https://www.doctolib.de/>

EMERGENCY SERVICES

Dial 112 in an emergency from anywhere in Europe

CRISIS SERVICE

Email: www.berliner-krisendienst.de
Phone: +49 30 390 63 10

IT and technical resources

To navigate your way through your studies at BIMM University Berlin, you have a number of technical resources at your disposal. Whether you have a specific request or just need some technical support, we have you covered. These are just some of the services we can provide:

- A downloadable offline copy of the latest version of office 365
- A terabyte of cloud data dedicated to you
- An online self service password management tool
- A virtual e-library packed with resources to aid your studies
- A student IT Support channel
- A dedicated student web page where all your resources are housed
- Mac Labs with an extensive software estate for qualifying courses

Please help us help you during your time at the BIMM University Berlin by:

- Choosing a complex password that you will remember that incorporates:
 - Eight or more characters
 - Uppercase, lowercase, numerals and symbols
 - A combination of words, rather than just one word
 - Make up a new word that's not in the dictionary
- Always maintain software versions on your personal devices that match the software versions in the Mac Labs
- Backup your important work in the cloud so it's safe




Join us in Berlin

To apply to BIMM University Berlin, please contact our Admissions Team or use the online application form at <https://www.bimm-institute.de/how-to-apply>

We can't wait for you to join us in this incredible city and start your career (and your life) in the creative industries.

 BIMMBerlin

 BIMMBerlin

 tvbimm

 bimm_berlin

Glossary

BVG - www.bvg.de

Berlin Transport Map - https://sbahn.berlin/fileadmin/user_upload/Liniennetz/S_U-Bahn-Liniennetz.pdf

Swapfiets - <https://swapfiets.de/en>

Lime - <https://www.li.me/en-co>

Circ - <https://www.circ.com>

Tier - <https://www.tier.app/en>

Emmy - <https://emmy-sharing.de/en>

Bolt - <https://bolt.eu/de-de/>

SIXT Share - <https://www.sixt.de/share>

Miles - <https://miles-mobility.com/home>

ShareNow - <https://www.share-now.com>

Nextbike - <https://www.nextbike.de/de/berlin/preise>

Donkey Republic - <https://www.donkey.bike>

Limebike - <https://www.li.me/en-co>

Jelbi - <https://www.jelbi.de/en/home/>

Berlin Getting Around - <https://www.berlin.de/en/getting-around>

Deutschland Ticket <https://www.bahn.com/en/offers/regional/deutschlandticket>

BVG Tickets - <https://www.bvg.de/en/tickets-tariffs>

FreeNow - <https://www.free-now.com/de>

Uber - <https://www.uber.com/de/de>

Berlin Airport - <https://ber.berlin-airport.de/en/orientation/getting-here.html>

Budget Traveler - <https://budgettraveller.org/?s=berlin>

Housing Anywhere Budget - <https://housinganywhere.com/Berlin--Germany/cost-of-living-berlin-students>

WG Gesucht - <http://wggesucht.de>

Berlin Freshers Group (Music Faculty) - <https://www.facebook.com/groups/BIMMBerlinFreshers>

Berlin Fresher Group (Screen & Film Faculty) - <https://www.facebook.com/groups/bimmberlinfreshersff>

Berlin FB Group - <https://www.facebook.com/groups/918408478231242>

The Social Hub - <https://www.thesocialhub.co/berlin-mitte/stay/hotel-stay/>

Spotahome - www.spotahome.com

The Home in Berlin - <https://home-in-berlin.de>

HousingAnywhere- <https://housinganywhere.com/Berlin--Germany/BIMM-Berlin/sign-up>

FRENDZ Living - www.frendzliving.com/locations

Easy Living - <http://easy-living4u.de>

Uniplaces - <https://bimm.uniplaces.com>

HousingAnywhere - <https://housinganywhere.com/Berlin--Germany/BIMM-Berlin/sign-up>

Home & Co - <https://www.homeand.co/>

Frendzliving - <https://www.frendzliving.com/locations>

Berlin99 Property - <http://berlin99.com>
Home Company - <http://berlin.homecompany.de>
Neon Wood - <http://neonwood.com>
Staytoo - <http://staytoo.de>
Spotahome - <http://spotahome.com>
Home For Rent - <http://homeforrent.de>
City Wohnen - <http://city-wohnen.de>
Xpat Rentals - <http://xpatrentals.com>
Immonet.de - <http://immonet.de>
Coming Home - <http://coming-home.org>
Null-Provision - <http://null-provision.de>
Wohnungsmarkt - <http://wohnungsmarkt24.de>
Immobilien Scout 24 - <http://immobilienscout24.de>
WG-Gesucht - <http://wg-gesucht.de/en>
The Home in Berlin- <https://home-in-berlin.de>
SMARTments - <https://www.smartmentsstudent.de>
Wohngemeinschaft - <http://wohngemeinschaft.de>
Erasmusu - <http://erasmusu.com>
Service Berlin - <https://service.berlin.de/dienstleistung/120686>
SCHUFA - <https://www.schufa.de/schufa-en>
Registration in Berlin - <https://housinganywhere.com/Berlin--Germany/registration-in-berlin>
Moving to Germany Checklist - <https://housinganywhere.com/Germany/moving-to-germany-checklist>
Cost of Living - <https://housinganywhere.com/Berlin--Germany/cost-of-living-berlin>
Tenant Rights in Germany - <https://housinganywhere.com/Germany/tenant-rights-in-germany>
Schufa - <https://www.meineschufa.de>
Check24 - <https://www.check24.de>
Service Berlin - <https://service.berlin.de/dienstleistung/305244/en>
Expatrio- <https://www.expatrio.com/xp/#/blocked-account/exploration/profession>
Finitiba- <https://www.finitiba.com/solutions/blocked-account-germany/>
Resident permit for studying: <https://service.berlin.de/dienstleistung/305244/en/?/dienstleistung/305244/en>
Jameda - <https://www.jameda.de/arztsuche>
Doctolib - <https://www.doctolib.de>
Term Dates - <https://www.bimm-institute.de/term-dates>
Student Wellbeing - <https://www.bimm-institute.de/student-support>



If you have any further questions, please don't
hesitate to contact our Student Wellbeing Team.

Tel: +49 (0) 30 311 99 186

Email: studentwellbeingberlin@bimm-institute.de

BIMM University Berlin - House of Music

House of Music (1.OG)

RAW-Gelände

Revaler Straße 99

10245 Berlin – Germany

BIMM University Berlin - Molecule Studios

Molecule Studios (3.OG)

Bouchéstraße 12

Haus 1

12435 Berlin - Germany

